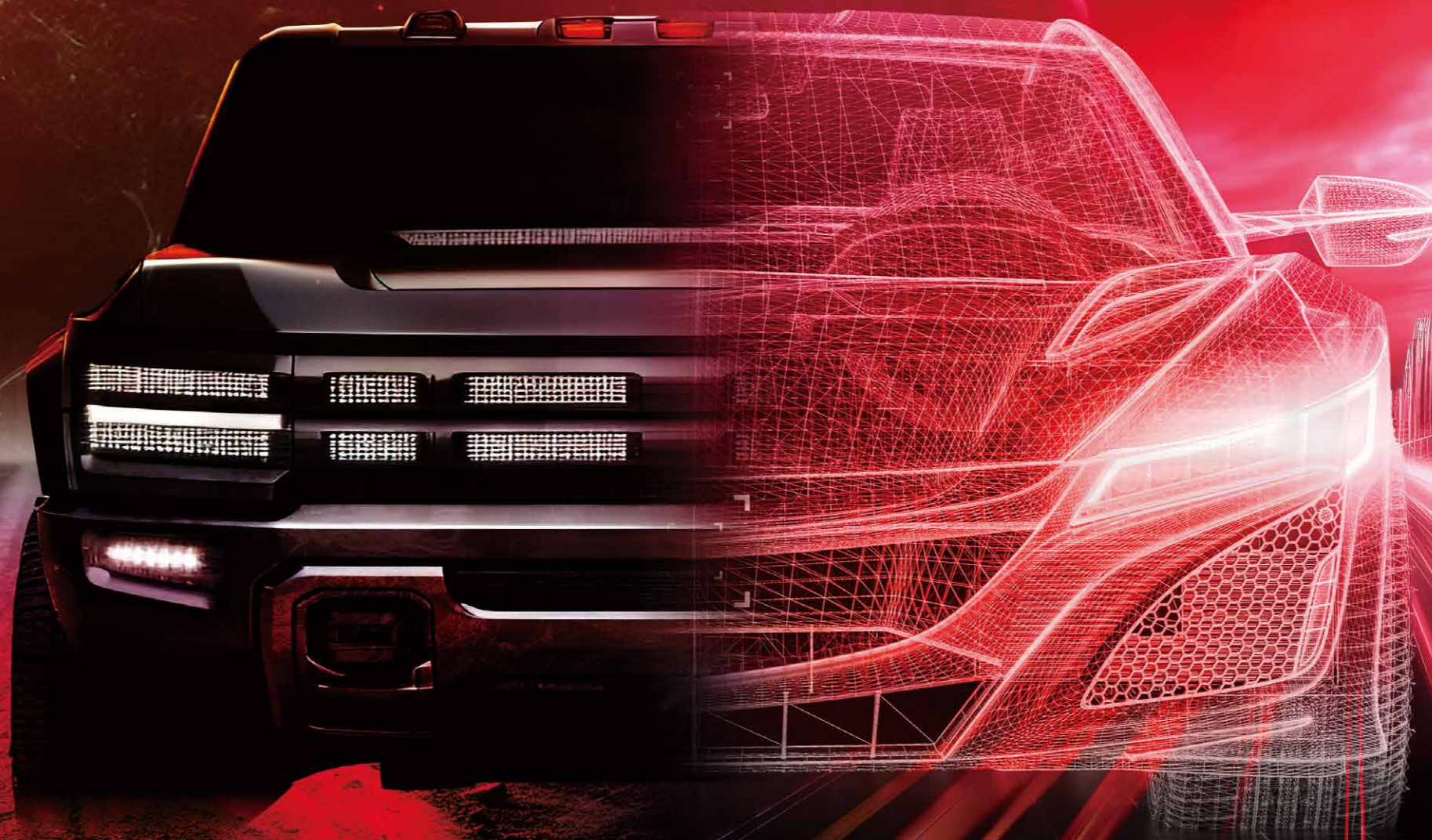


# YOKOHAMA TIRE CATALOG 2024

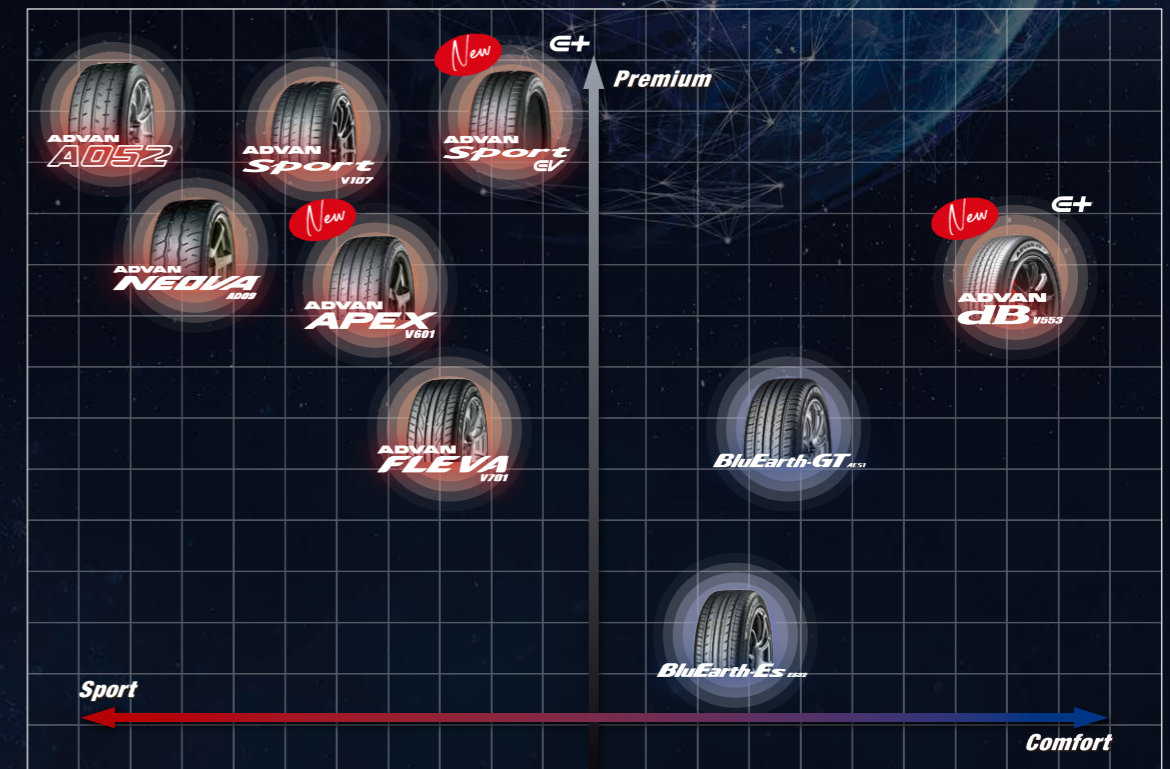




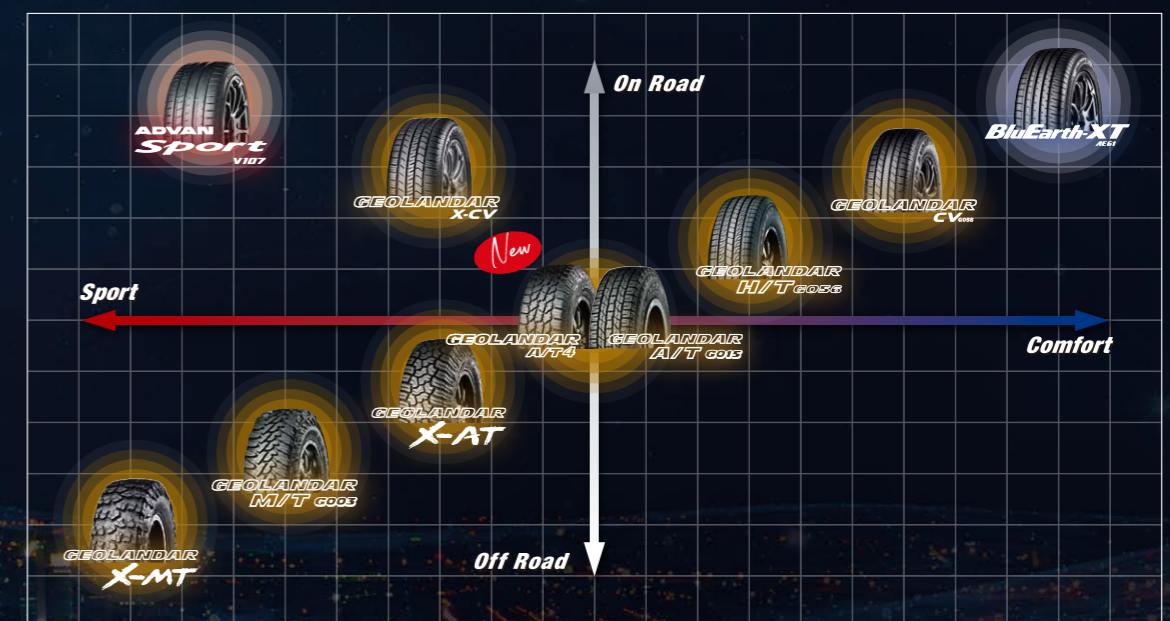
## Contents

Introduction	1-2	BluEarth-Van RY55	41
Product Line Up	3-4	PARADA Spec-X	42
<b>ADVAN</b>			
ADVAN SPORT V107	5	Original Equipment	43-44
<i>New</i> ADVAN SPORT EV V108	7	List Of Available Patterns & Sizes	45-52
ADVAN NEOVA AD09	9	Basic Tire Knowledge	53
ADVAN A052	11	Sidewall Information	54
<i>New</i> ADVAN APEX V601	13	Runflat Tire	55
ADVAN FLEVA V701	15	Air Pressure, Load Index (LI)	56
<i>New</i> ADVAN dB V553	17	About YOKOHAMA	57-59
<b>BluEarth</b>			
BluEarth RV-03	19	For Your Comfort & Safety	60
BluEarth-XT AE61	20	YOKOHAMA Global	61-64
BluEarth-GT AE51	21	Check Your Tires	65-66
BluEarth-Es ES32	23		
<b>GEOLANDAR</b>			
GEOLANDAR X-MT G005	25		
GEOLANDAR M/T G003	27		
GEOLANDAR X-AT G016	29		
<i>New</i> GEOLANDAR A/T4 G018	31		
GEOLANDAR A/T G015	33		
GEOLANDAR X-CV G057	35		
GEOLANDAR H/T G056	37		
GEOLANDAR CV G058	39		

## Passenger Car Tires Positioning Map



## SUV Tires Positioning Map



# Product Line Up

When you choose the tire that's right for your vehicle type, your car drives the way it should—and the way you want to drive! YOKOHAMA tire makes driving even more fun.

## High Performance / Sport car / Electric car

### ADVAN *Sport V107* P05



### ADVAN *Sport EV* P07



### ADVAN *NEOVA A009* P09



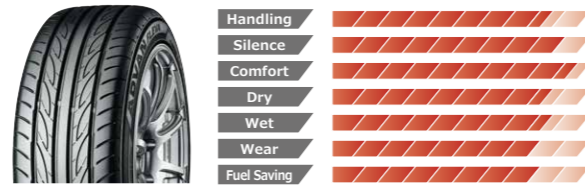
### ADVAN *A052* P11



### ADVAN *APEX V601* P13



### ADVAN *FLEVA V701* P15



## Luxury Saloon

### ADVAN *dB V553* P17



## URBAN/SUV

### BluEarth-XT AEG1 P20



## Family Car

### BluEarth-GT AEG1 P21

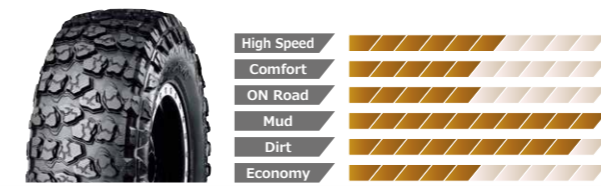


### BluEarth-Es ES32 P23

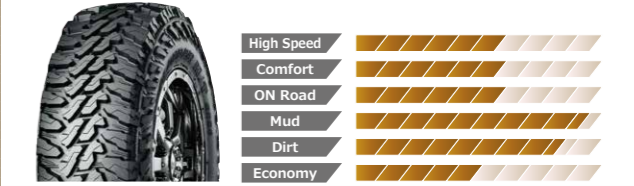


## SUV

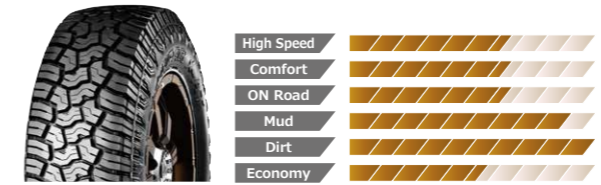
### GEOLANDAR *X-MT* P25



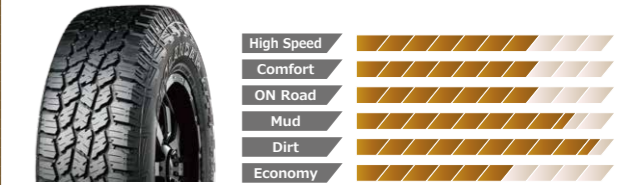
### GEOLANDAR *M/T G003* P27



### GEOLANDAR *X-AT* P29



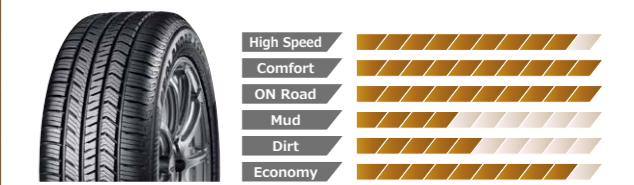
### GEOLANDAR *A/T4* P31



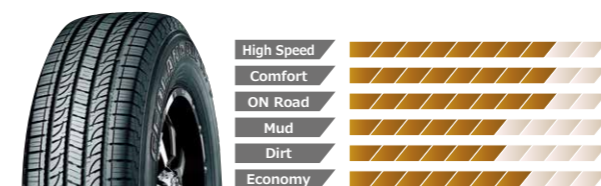
### GEOLANDAR *A/T G013* P33



### GEOLANDAR *X-CV* P35



### GEOLANDAR *H/T G056* P37



### GEOLANDAR *CV G058* P39







High performance summer tire exclusive for EV

# ADVAN Sport EV

**EV**  
SILENTFOAM

REDUCE NOISE FROM TIRE

New



Pattern No. V108



SPEED RANGE

Y/W

22 inch	21 inch	20 inch	19 inch	18 inch
------------	------------	------------	------------	------------



Wet Silence Dry Comfort High Speed Handling Asymmetric EV Electric Cost

## Proven and reliable pattern design, V107

### SILENCE

New shape of silent sipes suppress external vehicle noise.

### WET GRIP

Wider 3+1 main grooves contribute to drainage performance.



### DRY GRIP

High-rigidity Wide Shoulder realizes powerful grip in the dry.

IN

OUT

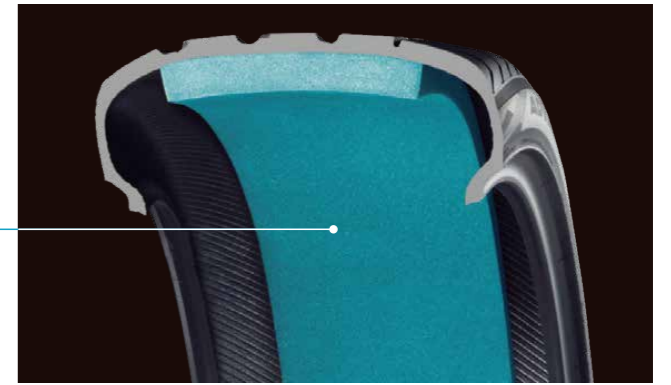
## Exclusively designed polyurethane foam

### SILENTFOAM

#### REDUCE NOISE FROM TIRE

Exclusively designed polyurethane foam reduces cavity noise\* which comes from uneven road surfaces and bumps. This gives a comfortable in-vehicle experience and suppresses noise outside the vehicle.

\*The noise, which is transmitted from the wheel rims to the interior of the Car



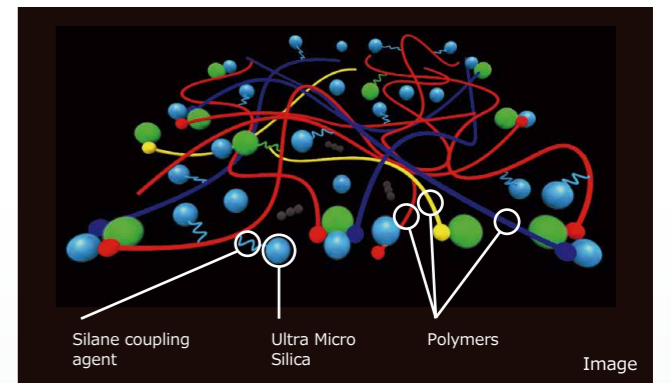
## ADVAN EV Compound

#### Electricity consumption

Consumption performance is achieved by uniformly blending Silica with a Silica dispersant.

#### Wet performance

The polymer blend and Silica content focus on rolling resistance and wet performance.



Silane coupling agent Ultra Micro Silica Polymers

Image

## Benefits & Features

#### Better electricity (fuel) consumption

Low RRC compound contributes to extend the cruising range. It was originally developed in the development of tyres for the premium OE.

#### Comfortable riding experience

Road noise is reduced dramatically by special equipment named SILENTFOAM. It will give you quietness while driving premium EV.

#### Safety driving on wet road

OE based compound and reliable V107 pattern design provide relief in wet road condition.



### ADVAN Sport EV Pattern No. V108

Inch	Series	Dimensions	Pattern	RF/XL	Overall Diameter (mm)	Approved Rim Width (inch)
22	35	265/35R22 102Y		XL	746	9-10.5
21	35	255/35ZR21 98W	⊗	XL	711	8.5-10
		275/35ZR21 103W	⊖	XL	725	9-11
		235/35ZR20 92Y		XL	672	8-9
20	35	245/35ZR20 95Y	⊖	XL	681	8-9.5
		295/35ZR20 105Y	⊖	XL	713	10-11.5
		255/40R20 101W	⊖	XL	716	8.5-10
40		255/40ZR20 101Y	⊖	XL	715	8.5-10

Inch	Series	Dimensions	Pattern	RF/XL	Overall Diameter (mm)	Approved Rim Width (inch)
20	45	245/45R20 103Y	⊖	XL	729	7.5-9
		255/45R20 105Y	⊕	XL	734	8-9.5
		275/45R20 110Y		XL	754	8.5-10.5
		235/40R19 96W	⊖	XL	672	8-9.5
19	40	285/40R19 107Y		XL	711	9.5-11
		255/45R19 104W		XL	715	8-9.5
		255/45R19 104Y		XL	714	8-9.5
18	45	235/45ZR18 98Y		XL	669	7.5-9

XL = Extra Load ⊗ = V108F Available size ⊖ = V108D Available size ⊕ = V108A Available size ⊕ = V108E Available size



GET READY

# ADVAN NEOVA AD09



SPEED RANGE

W/V

21 inch	20 inch	19 inch	18 inch	17 inch	16 inch	15 inch
------------	------------	------------	------------	------------	------------	------------



Pattern No. AD09

## The new tread pattern exclusively for AD09



### IN-SIDE for WET Performance

- **Increase the groove area**  
Wide wavy grooves enable enhanced drainage performance. Displays exceptional hydroplaning resistance at high speeds.

- **Tuning in/out groove angle to enhance block rigidity**



- **Smoothing block edge**  
Improving wear performance and keeping wet performance.

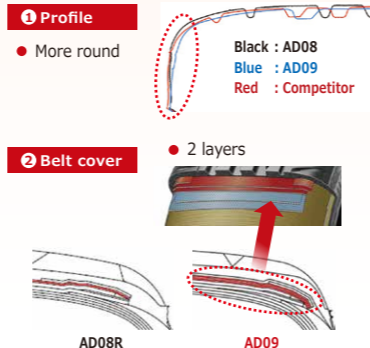


### OUT-SIDE for DRY Performance

- **Increase the contact area**  
Improved pattern rigidity through wide shoulders and greater road contact area ensure enhanced performance in the dry.

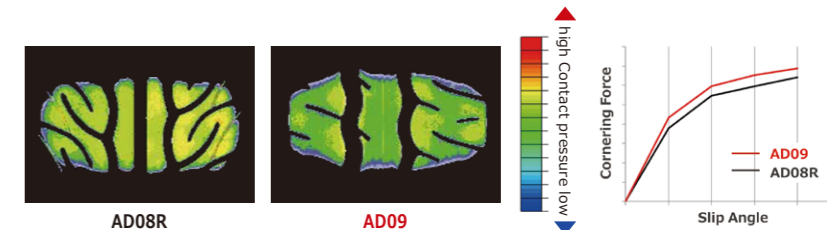
### Technical part

More round profile and Two-Layered belt cover achieve both high rigidity and high cornering force.



## Contact Shape with road surface

Improve dry performance and steering stability at high speed.



## Premium design with YOKOHAMA crafting

IA special tooling process in the molds combined with the YOKOHAMA group's unique expertise has led to the development of stylish dark design.



### ADVAN NEOVA AD09 Pattern No. AD09

Inch	Series	Dimensions	RF/XL	Overall Diameter (mm)	Approved Rim Width (inch)
21	30	305/30R21 104W	XL	718	10.5-11.5
		325/30R21 108W	XL	730	11-12
20	30	245/30R20 90W	XL	656	8-9
		265/30R20 94W	XL	668	9-10
		275/30R20 97W	XL	675	9-10
		285/30R20 99W	XL	682	9.5-10.5
		295/30R20 101W	XL	686	10-11
		305/30R20 103W	XL	692	10.5-11.5
		335/30R20 108W	XL	710	11.5-12.5
		235/35R20 92W	XL	673	8-9.5
35	30	245/35R20 95W	XL	681	8-9.5
		255/35R20 97W	XL	687	8.5-10
		265/35R20 99W	XL	694	9-10.5
		275/35R20 102W	XL	704	9-11
		285/35R20 104W	XL	709	9.5-11
		295/35R20 105W	XL	714	10-11.5
		245/40R20 99W	XL	705	8-9.5
40	30	255/40R20 101W	XL	715	8.5-10
		255/30R19 91W	XL	637	8.5-9.5
19	30	265/30R19 93W	XL	643	9-10
		275/30R19 96W	XL	650	9-10
		295/30R19 100W	XL	662	10-11
		305/30R19 102W	XL	667	10.5-11.5
		325/30R19 105W	XL	680	11-12
		225/35R19 88W	XL	643	7.5-9
		235/35R19 91W	XL	647	8-9.5
		245/35R19 93W	XL	657	8-9.5
35	30	255/35R19 96W	XL	662	8.5-10
		265/35R19 98W	XL	670	9-10.5
		275/35R19 100W	XL	676	9-11
		285/35R19 103W	XL	681	9.5-11
		225/40R19 93W	XL	662	7.5-9
		235/40R19 96W	XL	672	8-9.5
		245/40R19 98W	XL	679	8-9.5
		255/40R19 100W	XL	687	8.5-10
40	30	265/40R19 102W	XL	695	9-10.5
		275/40R19 105W	XL	701	9-11
		285/30R18 97W	XL	629	9.5-10.5
		295/30R18 98W	XL	636	10-11
		245/35R18 92W	XL	629	8-9.5

Inch	Series	Dimensions	RF/XL	Overall Diameter (mm)	Approved Rim Width (inch)
18	35	255/35R18 94W	XL	634	8.5-10
		265/35R18 97W	XL	643	9-10.5
40	35	295/35R18 103W	XL	664	10-11.5
		215/40R18 89W	XL	629	7-8.5
		225/40R18 92W	XL	637	7.5-9
		235/40R18 95W	XL	644	8-9.5
		245/40R18 97W	XL	656	8-9.5
		255/40R18 99W	XL	661	8.5-10
		265/40R18 101W	XL	668	9-10.5
		275/40R18 103W	XL	675	9-11
45	35	215/45R18 93W	XL	651	7-8
		225/45R18 95W	XL	658	7-8.5
		245/45R18 100W	XL	677	7.5-9
50	35	245/50R18 104W	XL	702	7-8.5
		215/40R17 87W	XL	604	7-8.5
17	40	235/40R17 90W		619	8-9.5
		245/40R17 91W		628	8-9.5
		255/40R17 98W	XL	636	8.5-10
45	35	195/45R17 81W		608	6-7.5
		205/45R17 88W	XL	615	6.5-7.5
		215/45R17 91W	XL	626	7-8
		225/45R17 94W	XL	634	7-8.5
		235/45R17 94W		642	7.5-9
		245/45R17 95W		652	7.5-9
		255/45R17 102W	XL	661	8-9.5
		205/50R17 89W		637	5.5-7.5
50	35	225/50R17 98W	XL	658	6-8
		195/45R16 80W	XL	580	6-7.5
		205/45R16 87W	XL	587	6.5-7.5
16	45	215/45R16 86W		598	7-8
		225/45R16 89W		605	7-8.5
		195/50R16 84V		604	5.5-7
		205/50R16 87V		612	5.5-7.5
		225/50R16 92V		630	6-8
55	50	205/55R16 91V		631	5.5-7.5
		195/50R15 82V		579	5.5-7
		205/50R15 86V		584	5.5-7.5
15	50	165/55R15 75V		562	4.5-6
		185/55R15 82V		586	5-6.5
		195/55R15 85V		596	5.5-7

XL = Extra Load



All New Ultimate Street Sport Tire

**ADVAN**  
**A052**



SPEED RANGE (Y)/Y/W/V

- 20 inch
- 19 inch
- 18 inch
- 17 inch
- 16 inch
- 15 inch
- 14 inch
- 13 inch

- Dry
- High Grip
- High Speed
- Handling
- Asymmetric

Pattern No. A052

**Asymmetric tread pattern**

**Adopting Mound-Profile**

For controlling the contact pressure of each block.

Balancing wet performance with the stability in the high speed area.

**Two Straight Grooves**

By locating 2 main straight grooves in the inside.

Enhance straight-line stability. And superior anti-hydroplaning.



**High-rigidity Tread Rib**

Locating 2 main grooves at inside, we realize the expansion of the contact area of the outside.

Delivering powerful cornering capability.

**Straight Thin Groove**

Locating a straight thin groove in the outside part where receive big pressure in the corner.

Enhance efficiently dissipate heat. Preventing time-drop.

All new Sport Compound, Specially Developed for A052

**Extreme Grip(Dry&Wet)**



**Fuel Efficiency**

MS Technology

BluEarth Technology

Ultra High level combination of each technology.

**Positioning Map & Target User**

**Sport Performance**

High Grip / Circuit / Lap Time



**ADVAN A050**  
(M/MH/H)



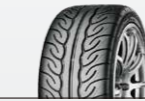
ADVAN A050 has several compounds which are fitted running distance or temperature range. We recommend A050 to the user who want to win the race seriously.

**ADVAN A052**



ADVAN A052 keeps both high driving performance and environmental performance at a high level. The handling performance is excellent. As well as a Pro-driver, it is suitable for all people who want to enjoy motor sports. Compared with ADVAN NEOVA AD08R, we recommend ADVAN A050 to more circuit-oriented user.

**ADVAN NEOVA AD08 R**



ADVAN AD08R is a street sport tire with aggressive pattern design. This is an almighty performance tire corresponding from street to circuit. Compared with ADVAN A052, we recommend ADVAN NEOVA AD08R to more street-oriented user.

**Sport Performance**

High Grip / Circuit / Lap Time



< Sport Performance >  
A052 is higher product of NEOVA and lower product of A050.

**ADVAN A052**

Pattern No. A052

Inch	Series	Dimensions	RF/XL	Overall Diameter (mm)	Approved Rim Width (inch)	
20	30	245/30ZR20 (90Y)	XL	656	8-9	
		265/30ZR20 (94Y)	XL	668	9-10	
		295/30R20 101Y	XL	687	10-11	
	35	235/35ZR20 (92Y)	XL	671	8-9.5	
		245/35ZR20 (95Y)	XL	680	8-9.5	
		265/35ZR20 (99Y)	XL	695	9-10.5	
		285/35ZR20 (104Y)	XL	710	9.5-11	
		255/40ZR20 (101Y)	XL	708	8.5-10	
	19	30	265/30ZR19 (93Y)	XL	645	9-10
			235/35ZR19 (91Y)	XL	646	8-9.5
		35	245/35ZR19 (93Y)	XL	654	8-9.5
			255/35ZR19 (96Y)	XL	660	8.5-10
265/35ZR19 (98Y)			XL	670	9-10.5	
275/35ZR19 (100Y)			XL	676	9-11	
295/35R19 104Y			XL	690	10-11.5	
40	235/40ZR19 (96Y)	XL	671	8-9.5		
	265/40ZR19 (102Y)	XL	695	9-10.5		
18	30	295/30R18 98Y	XL	637	10-11	
		315/30R18 98Y		649	10.5-11.5	
		225/35R18 87Y	XL	614	7.5-9	
	35	255/35R18 94Y	XL	637	8.5-10	
		265/35R18 97Y	XL	645	9-10.5	
		295/35R18 103Y	XL	666	10-11.5	
		225/40R18 92Y	XL	638	7.5-9	
		235/40R18 95Y	XL	647	8-9.5	
	40	245/40R18 97Y	XL	655	8-9.5	
		255/40R18 99Y	XL	664	8.5-10	

Inch	Series	Dimensions	RF/XL	Overall Diameter (mm)	Approved Rim Width (inch)
18	40	265/40R18 101Y	XL	672	9-10.5
		275/40R18 103Y	XL	678	9-11
	45	235/45R18 98Y	XL	669	7.5-9
265/45R18 104Y		XL	697	8.5-10	
17	40	205/40R17 84W	XL	594	7-8
		215/40R17 87W	XL	601	7-8.5
	245/40R17 95W	XL	628	8-9.5	
	45	255/40R17 98W	XL	639	8.5-10
		205/45R17 88W	XL	618	6.5-7.5
		215/45R17 91W	XL	628	7-8
225/45R17 94W		XL	637	7-8.5	
16	45	235/45R17 97W	XL	647	7.5-9
		195/45R16 84W	XL	579	6-7.5
		225/45R16 93W	XL	611	7-8.5
	50	245/45R16 94W		624	7.5-9
		195/50R16 88W	XL	600	5.5-7
		205/50R16 91W	XL	615	5.5-7.5
		225/50R16 96W	XL	635	6-8
15	50	205/55R16 94W	XL	635	5.5-7.5
		195/50R15 86V	XL	575	5.5-7
	55	205/50R15 89V	XL	585	5.5-7.5
		225/50R15 95V	XL	607	6-8
		195/55R15 89V	XL	593	5.5-7
14	55	185/55R14 80V		558	5-6.5
	60	185/60R14 86V	XL	579	5-6
13	60	185/60R13 80V		553	5-6
		205/60R13 86V		577	5.5-7.5

XL = Extra Load



MAKE YOUR CONTROL DIRECT.

# ADVAN APEX V601

New



SPEED RANGE

Y

21 inch 20 inch 19 inch 18 inch 17 inch



Dry Comfort High Speed Handling Asymmetric

Pattern No. V601

## New Asymmetric Tread Design



### For WET Performance

- Increase the groove area

### Center Straight Block

Straight block placed at the center of the tread enhances stability at the high speed and handling performance.

### Lightning Block

By arranging non-penetrating sipes and grooves, while improving the wet performance, maintain the block rigidity. And Achieve the edge effect on wet surface.

### Lightning Edge Groove

While increase the groove area, maintain block rigidity. Enhance both wet performance and driving performance at same time.



### For DRY Performance

- Increase the contact area

### Wide Strong Rib Block

The wide rib block not separated by lateral grooves has high block stiffness. Achieves high dry grip and cornering performance.

### Narrow Straight Groove

Enhance drain. And evacuate the heat of the wide rib block to prevent the decrease in dry performance.

### 3 + 1 Straight Line Groove

Precisely placed straight grooves enhance wet performance, and wide outer rib blocks maximize dry performance.

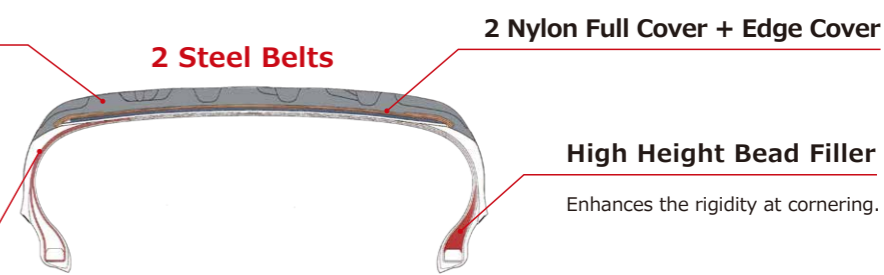
## Construction & Compound

### Excellent dry & wet grip compound

Mixed a lot of silica with 3 polymers that have different properties. "polymers that highly react with silica," "wet grip polymers," and "wear resistance polymers".

### Carcass Ultra High turn up construction.

Achieves weight reduction while keeping the strength of the sidewall. (1-0 BIT Construction \*depend on the tire size)



## Stylish ADVAN logo design

The ADVAN logo is engraved on the outside block and shoulder.



## Tread Design

Optimized groove angles minimize road noise for a more comfortable, quiet ride



## ADVAN APEX V601

Pattern No. V601

Inch	Series	Dimensions	RF/XL	Overall Diameter (mm)	Approved Rim Width (inch)
21	35	245/35R21 96Y	XL	705	8-9.5
		265/35R21 101Y	XL	722	9-10.5
20	30	245/30R20 90Y	XL	655	8-9
		265/30R20 94Y	XL	670	9-10
		275/30R20 97Y	XL	674	9-10
		285/30R20 99Y	XL	681	9.5-10.5
		295/30R20 101Y	XL	687	10-11
		305/30R20 103Y	XL	692	10.5-11.5
35	35	235/35R20 92Y	XL	672	8-9.5
		245/35R20 95Y	XL	681	8-9.5
		255/35R20 97Y	XL	686	8.5-10
		265/35R20 99Y	XL	695	9-10.5
		275/35R20 102Y	XL	700	9-11
		285/35R20 104Y	XL	708	9.5-11
40	40	305/35R20 107Y	XL	721	10-12
		245/40R20 99Y	XL	705	8-9.5
		275/40R20 106Y	XL	728	9-11
45	45	245/45R20 103Y	XL	729	7.5-9
		255/30R19 91Y	XL	637	8.5-9.5
19	30	285/30R19 98Y	XL	656	9.5-10.5
		295/30R19 100Y	XL	660	10-11
		305/30R19 102Y	XL	666	10.5-11.5
		325/30R19 105Y	XL	677	11-12
		225/35R19 88Y	XL	641	7.5-9
35	35	235/35R19 91Y	XL	647	8-9.5
		245/35R19 93Y	XL	655	8-9.5
		255/35R19 96Y	XL	661	8.5-10

Inch	Series	Dimensions	RF/XL	Overall Diameter (mm)	Approved Rim Width (inch)
19	35	265/35R19 98Y	XL	670	9-10.5
		275/35R19 100Y	XL	675	9-11
40	40	285/35R19 103Y	XL	684	9.5-11
		225/40R19 93Y	XL	662	7.5-9
		235/40R19 96Y	XL	673	8-9.5
		245/40R19 98Y	XL	680	8-9.5
		255/40R19 100Y	XL	688	8.5-10
		275/40R19 105Y	XL	702	9-11
45	45	225/45R19 96Y	XL	685	7-8.5
		245/45R19 102Y	XL	704	7.5-9
		245/35R18 92Y	XL	628	8-9.5
18	35	255/35R18 94Y	XL	636	8.5-10
		265/35R18 97Y	XL	643	9-10.5
		275/35R18 99Y	XL	646	9-11
		225/40R18 92Y	XL	638	7.5-9
		235/40R18 95Y	XL	645	8-9.5
40	40	245/40R18 97Y	XL	654	8-9.5
		255/40R18 99Y	XL	662	8.5-10
		275/40R18 103Y	XL	677	9-11
		225/45R18 95Y	XL	658	7-8.5
45	45	235/45R18 98Y	XL	669	7.5-9
		245/45R18 100Y	XL	677	7.5-9
		255/45R18 103Y	XL	688	8-9.5
50	50	235/50R18 101Y	XL	692	6.5-8.5
		245/40R17 95Y	XL	626	8-9.5
17	45	225/45R17 94Y	XL	633	7-8.5
		245/45R17 99Y	XL	651	7.5-9

XL = Extra Load





Emotional handling

# ADVAN FLEVA V701



SPEED RANGE

W/V

- 20 inch
- 19 inch
- 18 inch
- 17 inch
- 16 inch
- 15 inch



Pattern No. V701

## Cool & Attractive Design

A direction pattern offers an attractive and aggressive look.

### Directional tread pattern

Features a directional tread pattern with more edges facing the road surface. A direction pattern offers an attractive and aggressive look.

### Lightning-shaped straight grooves

The main grooves have more edge components through a lightning-shaped design. In addition to the improved traction this delivers excellent hydroplaning resistance.

### Wide sword grooves

The lug grooves have more edge components. The non-penetrating lug groove increases block stiffness and enhances the direct feeling of handling.

### Claw grooves

The claw grooves push aside water at corners. The groove design increases effective groove length.



## Most advanced ADVAN profile

- Profile adapted from the ADVAN Sport V105.
- Improvement of the steering stability by high speed range requested by European car manufacturer.
- Improvement of optimization of the ground contact.



## Differentiating between the pitch layout for the shoulder and center

- Increased tread pattern stiffness realizes a more direct feeling to handling.
- Optimized ground contact area.
- Reduces tire noise, and enhances ride quietness.



### ADVAN FLEVA V701 Pattern No. V701

Inch	Series	Dimensions	RF/XL	Overall Diameter (mm)	Approved Rim Width (inch)
20	30	255/30R20 92W	XL	662	8.5-9.5
		275/30R20 97W	XL	674	9-10
		285/30R20 99W	XL	681	9.5-10.5
	35	225/35R20 90W	XL	665	7.5-9
		275/35R20 102W	XL	702	9-11
19	40	245/40R20 99W	XL	704	8-9.5
		255/30R19 91W	XL	637	8.5-9.5
	35	265/30R19 93W	XL	642	9-10
		225/35R19 88W	XL	642	7.5-9
	40	235/35R19 91W	XL	648	8-9.5
		245/35R19 93W	XL	655	8-9.5
		255/35R19 96W	XL	661	8.5-10
		275/35R19 100W	XL	673	9-11
		225/40R19 93W	XL	665	7.5-9
		245/40R19 98W	XL	680	8-9.5
45	275/40R19 105W	XL	704	9-11	
		225/45R19 92W		686	7-8.5
	50	225/45R19 96W	XL	687	7-8.5
		235/45R19 95W		695	7.5-9
		215/35R18 84W	XL	606	7-8.5
18	35	225/35R18 87W	XL	614	7.5-9
		245/35R18 92W	XL	627	8-9.5
	40	255/35R18 94W	XL	636	8.5-10
		265/35R18 97W	XL	641	9-10.5
		275/35R18 99W	XL	648	9-11
		205/40R18 86W	XL	622	7-8
	45	215/40R18 89W	XL	630	7-8.5
		225/40R18 92W	XL	635	7.5-9
		235/40R18 95W	XL	644	8-9.5
		245/40R18 97W	XL	653	8-9.5
50	255/40R18 99W	XL	659	8.5-10	
		275/40R18 103W	XL	677	9-11
	55	215/45R18 93W	XL	652	7-8
		225/45R18 95W	XL	659	7-8.5
		245/45R18 100W	XL	676	7.5-9
50	255/45R18 99W		686	8-9.5	
	225/50R18 99W	XL	682	6-8	

Inch	Series	Dimensions	RF/XL	Overall Diameter (mm)	Approved Rim Width (inch)
18	50	235/50R18 97V		691	6.5-8.5
		235/55R18 100V		713	6.5-8.5
17	40	195/40R17 81W	XL	589	6.5-7.5
		205/40R17 84W	XL	595	7-8
	215/40R17 87W	XL	602	7-8.5	
	45	235/40R17 90W		619	8-9.5
		245/40R17 95W	XL	626	8-9.5
255/40R17 94W			635	8.5-10	
16	50	195/45R17 85W	XL	608	6-7.5
		205/45R17 88W	XL	615	6.5-7.5
		215/45R17 91W	XL	626	7-8
	55	225/45R17 94W	XL	633	7-8.5
		235/45R17 97W	XL	643	7.5-9
		205/50R17 93W	XL	638	5.5-7.5
		215/50R17 95W	XL	647	6-7.5
15	45	225/50R17 98W	XL	657	6-8
		205/55R17 91V		657	5.5-7.5
	50	215/55R17 94W		667	6-7.5
		225/55R17 97W		676	6-8
		195/45R16 84W	XL	582	6-7.5
	55	205/45R16 87W	XL	589	6.5-7.5
		215/45R16 90W	XL	598	7-8
		195/50R16 84V		600	5.5-7
		205/50R16 87V		610	5.5-7.5
	15	50	225/50R16 92W		629
195/55R16 87V				618	5.5-7
55		205/55R16 91W		631	5.5-7.5
		215/55R16 93W		639	6-7.5
		225/55R16 95W		650	6-8
50		165/50R15 73V		548	4.5-6
		195/50R15 82V		576	5.5-7
		205/50R15 86V		583	5.5-7.5
55	185/55R15 82V		583	5-6.5	
	195/55R15 85V		594	5.5-7	
	205/55R15 88V		605	5.5-7.5	

XL = Extra Load



Luxury Silence

# ADVAN dB V553

New



ET



SPEED RANGE

Y/W/V/H

- 21 inch
- 20 inch
- 19 inch
- 18 inch
- 17 inch
- 16 inch
- 15 inch
- 14 inch

- Wet
- Dry
- Silence
- Comfort
- Handling
- Asymmetric

Pattern No. V553

## Newly designed tread pattern produces quietness and reliable wear / wet performance

### Subdivided into 144 blocks

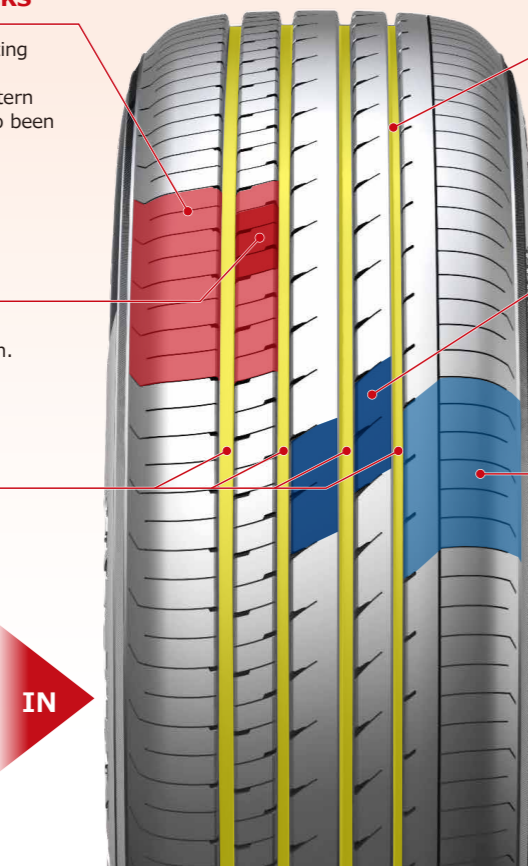
To reduce the sound of each block hitting the road surface, the tire surface is composed of fine blocks to reduce pattern noise. The number of grooves has also been increased to ensure drainage and high performance in wet conditions.

### Staggered placement of grooves and sipes

Staggered placement, optimization of block rigidity, and frequency dispersion.

### Four main grooves for improved drainage

The inside and outside grooves of the tire are designed to fulfill different roles. The inside grooves are for wet performance, and the outside grooves are for dry performance, with the four main grooves arranged such that they become thicker toward the inside. This achieves a high level of balance between drainage and handling stability / maneuverability.



### Narrow straight groove processing

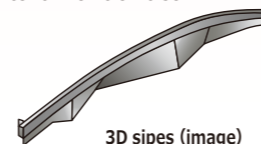
Narrow straight groove arrangement optimizes block rigidity and complements the wet performance of the outside portion by improving maneuverability.

### Performance optimized by chamfering and sipes

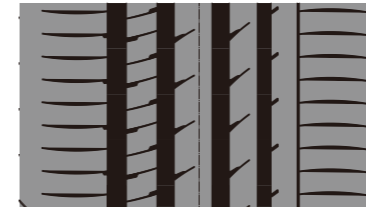
Chamfering and sipes ensure drainage while further optimizing block rigidity and suppressing pattern noise.

### Further improvements to block rigidity

Shoulder lug grooves are formed by 3D sipes for improved block rigidity. This also contributes to handling stability / maneuverability, wear resistance, and suppression of exterior vehicle noise.

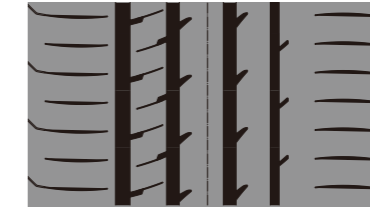


## Designed to retain its original form and minimize performance degradation, with components remaining largely unchanged from when the tire is new, even after wear



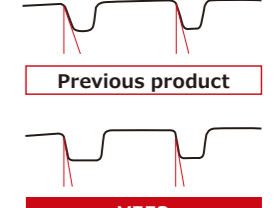
When new

- Designed to increase the volume of the main grooves, ensuring wet performance when new and minimizing the degradation of wet performance during wear.



At 60% wear

- Designed to minimize changes from when the tire was new.
- Narrow straight grooves disappear, limiting the worsening of pattern noise.



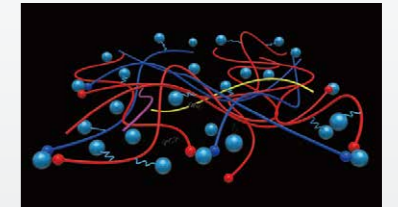
Previous product

V553

- The groove walls are designed to stand erect, reducing the change in groove volume after wear, and reducing the loss of wet performance.

## Delivers opposing wet performance and fuel economy at a high level

- Silica does not mix easily with rubber, but is dispersed evenly by a blend of coupling agents and silica dispersants.
- Small grain particulate silica is used to improve wet performance and wear resistance by increasing adhesive friction.
- A.R.T. mixing is applied to enhance silica dispersion. It also offers a high balance of wear resistance, wet performance, and roll resistance.



### ADVAN dB V553 Pattern No. V553

Inch	Series	Dimensions	Pattern	RF/XL	Overall Diameter (mm)	Approved Rim Width (inch)
21	45	225/45R21 95W			735	7-8.5
20	40	245/40R20 99W		XL	706	8-9.5
19	40	235/40R19 96Y		XL	671	8-9.5
		245/40R19 98W		XL	679	8-9.5
45		225/45R19 96W		XL	685	7-8.5
		245/45R19 102Y		XL	703	7.5-9
50		195/50R19 88H			682	5.5-7
		245/50R19 101W			729	7-8.5
55		225/55R19 103V		XL	732	6-8
18	35	265/35R18 97W		XL	644	9-10.5
		225/40R18 92W		XL	638	7.5-9
		235/40R18 95W		XL	645	8-9.5
45		245/40R18 97Y		XL	653	8-9.5
		215/45R18 93W		XL	651	7-8
50		225/45R18 95W		XL	657	7-8.5
		235/45R18 98W		XL	669	7.5-9
		245/45R18 100W		XL	677	7.5-9
60		225/50R18 99W		XL	683	6-8
		235/50R18 97W			699	6.5-8.5
		245/50R18 100W			703	7-8.5
55		225/55R18 98V			705	6-8
60		225/60R18 104W		XL	727	6-8
17	45	205/45R17 88W		XL	616	6.5-7.5

Inch	Series	Dimensions	Pattern	RF/XL	Overall Diameter (mm)	Approved Rim Width (inch)
17	45	215/45R17 91W		XL	626	7-8
		225/45R17 91W			634	7-8.5
50		245/45R17 99W		XL	652	7.5-9
		205/50R17 93W		XL	638	5.5-7.5
55		215/50R17 95V		XL	648	6-7.5
		225/50R17 94W			658	6-8
60		215/55R17 94W			672	6-7.5
		225/55R17 97W			680	6-8
60		195/60R17 90H			666	5.5-7
		215/60R17 96H			690	6-7.5
65		225/60R17 99H			702	6-8
		225/65R17 106V		XL	724	6-8
16	55	195/55R16 87V			620	5.5-7
		205/55R16 91W			632	5.5-7.5
60		195/60R16 89V			640	5.5-7
		205/60R16 92V			652	5.5-7.5
15	55	215/60R16 95V			666	6-7.5
		165/55R15 75V		x	563	4.5-6
65		185/60R15 84H		x	603	5-6.5
		175/65R15 84H		x	609	5-6
60		185/65R15 88H		x	620	5-6.5
		195/65R15 91H			635	5.5-7
14	65	155/65R14 75H		x	559	4.5-5.5

XL = Extra Load x = V553A Available size



Specially designed for MPVs

# BluEarth-RV RV03



SPEED RANGE

W/V/H

- 20  
inch
- 19  
inch
- 18  
inch
- 17  
inch
- 16  
inch
- 15  
inch



Pattern No. RV03

JUST FOR YOU, URBAN SUV TIRE

# BluEarth-XT AE61



SPEED RANGE

W/V/H

- 20  
inch
- 19  
inch
- 18  
inch
- 17  
inch
- 16  
inch



Pattern No. AE61

## Improved quietness and considerations designed for MPVs

### High rigidity shoulder

- Resists uneven wear
- Excellent steering stability

### Diagonal cut grooves

Excellent Wet performance

### Four straight grooves

Anti-hydroplaning



### High rigidity sipes

- Suppress noise
- Resists uneven wear

### Two wide ribs

Excellent steering stability

## All-New pattern for Urban SUVs

### Triple center rib

### Power inside shoulder

### Inside narrow groove

### Four straight grooves



Silent edge groove

High-rigidity active shoulder

Optimizing lug groove layout

Five pitches tread pattern variations



### BluEarth-RV RV03

Pattern No. RV03

Inch	Series	Dimensions	RF/XL	Overall Diameter (mm)	Approved Rim Width (inch)
20	35	245/35R20 95W	XL	680	8-9.5
	40	245/40R20 99W	XL	704	8-9.5
19	40	225/40R19 93W	XL	663	7.5-9
		245/40R19 98W	XL	679	8-9.5
	45	225/45R19 96W	XL	685	7-8.5
		245/45R19 102W	XL	703	7.5-9
	55	225/55R19 103H	XL	731	6-8
18	45	215/45R18 93W	XL	651	7-8
		225/45R18 95W	XL	659	7-8.5
	50	225/50R18 95V		683	6-8
		235/50R18 101V	XL	693	6.5-8.5
	55	225/55R18 98V		705	6-8
	60	225/60R18 100H		727	6-8
17	45	215/45R17 91W	XL	626	7-8
	50	205/50R17 93V	XL	638	5.5-7.5
		215/50R17 95V	XL	648	6-7.5
	55	205/55R17 95V	XL	658	5.5-7.5

Inch	Series	Dimensions	RF/XL	Overall Diameter (mm)	Approved Rim Width (inch)
17	55	215/55R17 94V		668	6-7.5
		225/55R17 101V	XL	680	6-8
	60	215/60R17 96H		690	6-7.5
		225/60R17 99H		702	6-8
	65	225/65R17 102H		724	6-8
16	55	205/55R16 91W		632	5.5-7.5
	60	195/60R16 89V		640	5.5-7
		205/60R16 96H	XL	652	5.5-7.5
		215/60R16 95H		664	6-7.5
	65	205/65R16 95H		672	5.5-7.5
		215/65R16 98H		686	6-7.5
15	60	185/60R15 84H		603	5-6.5
	65	185/65R15 88H		621	5-6.5
		195/65R15 91H		635	5.5-7
		205/65R15 94V		647	5.5-7.5
		215/65R15 96H		661	6-7.5

XL = Extra Load

### BluEarth-XT AE61

Pattern No. AE61

Inch	Series	Dimensions	Pattern	RF/XL	Overall Diameter (mm)	Approved Rim Width (inch)
20	45	245/45R20 103W		XL	728	7.5-9
		255/45R20 105W		XL	738	8-9.5
	50	235/50R20 100V	Æ		744	6.5-8.5
		235/50R20 104V		XL	744	6.5-8.5
	55	235/55R20 102V			766	6.5-8.5
19	45	225/45R19 92W			685	7-8.5
	50	235/50R19 103V		XL	719	6.5-8.5
		245/50R19 105W		XL	729	7-8.5
	55	225/55R19 99V			731	6-8
		235/55R19 101V			741	6.5-8.5
		235/55R19 105V		XL	741	6.5-8.5
18	50	215/50R18 92V			673	6-7.5
		225/50R18 95V			683	6-8
		225/50R18 99V		XL	683	6-8
		225/50RF18 95V			683	6-8
		235/50R18 97V			693	6.5-8.5
	55	215/55R18 99V		XL	693	6-7.5
		225/55R18 98V			705	6-8
		235/55R18 100V			715	6.5-8.5
	60	225/60R18 100H			727	6-8
		225/60R18 100V			727	6-8
		235/60R18 103H	Λ		741	6.5-8.5

Inch	Series	Dimensions	Pattern	RF/XL	Overall Diameter (mm)	Approved Rim Width (inch)
18	60	235/60R18 103W			739	6.5-8.5
	65	235/65R18 106V			763	6.5-8.5
17	50	215/50R17 91V			648	6-7.5
	55	205/55R17 91V			658	5.5-7.5
		215/55R17 94V			668	6-7.5
		225/55R17 97W			680	6-8
		235/55R17 103W		XL	690	6.5-8.5
		235/55R17 99H			690	6.5-8.5
	60	195/60R17 90H			666	5.5-7
		215/60R17 96H			690	6-7.5
		225/60R17 99V			702	6-8
		235/60R17 102V			714	6.5-8.5
	65	215/65R17 99V			712	6-7.5
		225/65R17 102H			724	6-8
		225/65R17 106V		XL	724	6-8
		235/65R17 108V		XL	738	6.5-8.5
16	60	205/60R16 92V			652	5.5-7.5
		215/60R16 95V			664	6-7.5
	65	195/65R16 92H			660	5.5-7
		205/65R16 95H			672	5.5-7.5
		215/65R16 98H			686	6-7.5
	70	215/70R16 100H			708	5.5-7

XL = Extra Load Λ = AE61E Available size Æ = AE61 Z-P-S Available size



GRAND TOURING

# BluEarth-GT AE51



SPEED RANGE

W/V/H/T

20 inch	19 inch	18 inch	17 inch	16 inch	15 inch	14 inch
------------	------------	------------	------------	------------	------------	------------



Pattern No. AE51

## Newly-developed High-rigidity, Asymmetrical Pattern for Spirited Driving

### Triple Center Rib

Highly rigid triple ribs ensure straight-line stability at high speeds.

### Blade Cut Sipes

Turned rigidity with blade-image sipes.



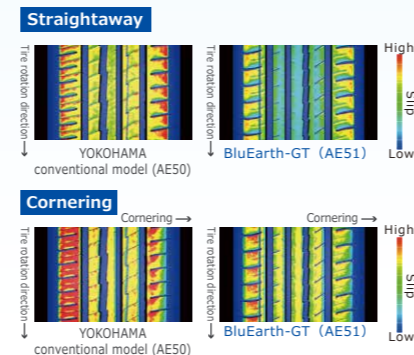
image

### Lightning Grooves

Increasing total edge volume, improving grip performance.

### Simulation

Calculating Slip and Increasing Stability.



## BluEarth-GT AE51 Pattern No. AE51

Inch	Series	Dimensions	Pattern	RF/XL	Overall Diameter (mm)	Approved Rim Width (inch)
20	30	275/30R20 97W		XL	674	9-10
	35	245/35R20 95W		XL	680	8-9.5
19	30	275/30R19 96W		XL	649	9-10
	35	225/35R19 88W		XL	640	7.5-9
		235/35R19 91W		XL	646	8-9.5
		245/35R19 93W		XL	652	8-9.5
		255/35R19 96W		XL	660	8.5-10
		275/35R19 100W		XL	675	9-11
	40	225/40R19 93W		XL	662	7.5-9
		235/40R19 96W		XL	671	8-9.5
		245/40R19 98W		XL	677	8-9.5
	45	225/45R19 96W		XL	687	7-8.5
		235/45R19 95W			694	7.5-9
		245/45R19 98W			705	7.5-9
	50	195/50R19 88H	⊞		682	5.5-7
18	35	225/35R18 87W		XL	615	7.5-9
		255/35R18 94W		XL	634	8.5-10
		265/35R18 97W		XL	641	9-10.5
	40	205/40R18 86W		XL	620	7-8
		215/40R18 89W		XL	628	7-8.5
		225/40R18 92W		XL	638	7.5-9
		235/40R18 95W		XL	642	8-9.5
		245/40R18 97W		XL	652	8-9.5
		255/40R18 99W		XL	661	8.5-10
	45	215/45R18 93W		XL	650	7-8
		225/45R18 91W	δ		659	7-8.5
		225/45R18 91W	Ω		659	7-8.5
		225/45R18 95W		XL	660	7-8.5
		235/45R18 94W			670	7.5-9
		245/45R18 100W		XL	676	7.5-9
		255/45R18 99W			686	8-9.5
	50	225/50R18 95W			683	6-8
		235/50R18 101W		XL	693	6.5-8.5
		245/50R18 100W			703	7-8.5
17	40	245/40R17 91W			629	8-9.5
	45	205/45R17 88W		XL	616	6.5-7.5
		215/45R17 87W	¶		626	7-8
		215/45R17 91W		XL	625	7-8
		225/45R17 94W		XL	634	7-8.5
		235/45R17 97W		XL	643	7.5-9
		245/45R17 99W		XL	651	7.5-9
	50	205/50R17 93W		XL	640	5.5-7.5
		215/50R17 95W		XL	649	6-7.5
		225/50R17 98W		XL	657	6-8
	55	205/55R17 95V		XL	657	5.5-7.5
		215/55R17 94V	Π		669	6-7.5

Inch	Series	Dimensions	Pattern	RF/XL	Overall Diameter (mm)	Approved Rim Width (inch)
17	55	215/55R17 98W		XL	670	6-7.5
		225/55R17 101W		XL	680	6-8
		235/55R17 99W			691	6.5-8.5
	60	195/60R17 90V			665	5.5-7
16	45	195/45R16 84V		XL	583	6-7.5
		205/45R16 87W		XL	590	6.5-7.5
		215/45R16 90V		XL	599	7-8
	50	195/50R16 88V		XL	602	5.5-7
		205/50R16 87W			613	5.5-7.5
	55	185/55R16 83V			609	5-6.5
		195/55R16 87V			619	5.5-7
		205/55R16 91V			631	5.5-7.5
		205/55R16 91V	Π		636	5.5-7.5
		205/55R16 91W			629	5.5-7.5
		205/55R16 94V		XL	631	5.5-7.5
		215/55R16 97W		XL	640	6-7.5
		225/55R16 99W		XL	653	6-8
	60	175/60R16 82H			619	5-6
		185/60R16 86H			630	5-6.5
		195/60R16 89H			640	5.5-7
		205/60R16 92V			655	5.5-7.5
		205/60R16 92V	Σ		656	5.5-7.5
		205/60R16 96W		XL	651	5.5-7.5
		215/60R16 95H			665	6-7.5
		215/60R16 99V		XL	665	6-7.5
		225/60R16 98H			674	6-8
	65	205/65R16 95H			671	5.5-7.5
		205/65R16 95H	Ψ		671	5.5-7.5
		205/65R16 95H	Ω		671	5.5-7.5
		215/65R16 98H			687	6-7.5
		215/65R16 98H	Σ		686	6-7.5
15	55	165/55R15 75V			560	4.5-6
		185/55R15 82V			585	5-6.5
		195/55R15 85V			594	5.5-7
	60	175/60R15 81H			592	5-6
		185/60R15 84H			604	5-6.5
		195/60R15 88V			613	5.5-7
	65	175/65R15 84H			609	5-6
		185/65R15 88H			621	5-6.5
		185/65R15 88T	Ω		622	5-6.5
		195/65R15 91H			636	5.5-7
		195/65R15 91V			633	5.5-7
		205/65R15 94H			646	5.5-7.5
14	65	155/65R14 75H			560	4.5-5.5
		175/65R14 82H			584	5-6
		185/65R14 86H			596	5-6.5

XL = Extra Load ⊞ = AE51J Available size δ = AE51C Available size ¶ = AE51G Available size  
 Π = AE51B Available size Σ = AE51E Available size Ψ = AE51A Available size  
 Ω = AE51D Available size

Grip the Earth

# BluEarth-Es ES32



SPEED RANGE

W/V/H/T

- |            |            |            |            |            |            |
|------------|------------|------------|------------|------------|------------|
| 18<br>inch | 17<br>inch | 16<br>inch | 15<br>inch | 14<br>inch | 13<br>inch |
|------------|------------|------------|------------|------------|------------|



Pattern No.ES32

## The all new Powerful and Comfortable Tread Design

### Extra Powerful Profile

High rigidity and tough, Anti-uneven wear

### Multiple Powerful Shoulder

Combination of deep lugs and sipes  
Stability, Evacuation, Anti-uneven wear

### 5 Pitch Tread Pattern

Low pattern noise, Anti-uneven wear



### Lightning Groove

High rigidity and proper edge volume  
Safety, Drainage on Wet roads

### Wide Straight Grooves

Anti-Hydro, Water draining on Wet braking  
Straight driving and handling

Simple and Powerful shoulder block design delivers reliable grip and excellent durability.



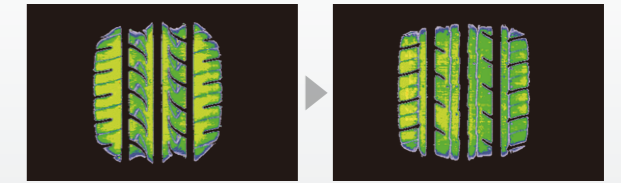
Optimised tread design adopted for each size width.



ES32 standard design WIDTH: 145-215  
ES32A wide-design WIDTH: 225 and more

The all new Powerful and Comfortable Tread Design

Contact pressure homogenization and improvement of uneven wear.



Current standard tire AE01 BluEarth-Es ES32

## BluEarth-Es ES32 Pattern No. ES32

Inch	Series	Dimensions	Pattern	RF/XL	Overall Diameter (mm)	Approved Rim Width (inch)
18	40	225/40R18 92W	❖	XL	637	7.5-9
		235/40R18 95W		XL	645	8-9.5
17	40	205/40R17 84V		XL	597	7-8
		215/40R17 87V		XL	605	7-8.5
	45	245/40R17 91V	❖		629	8-9.5
		205/45R17 84V			614	6.5-7.5
50	45	215/45R17 91V		XL	625	7-8
		225/45R17 94V		❖	XL	634
	55	235/45R17 97V	❖	XL	645	7.5-9
		215/50R17 95V		XL	646	6-7.5
16	50	225/50R17 94V	❖		658	6-8
		215/55R17 94V			666	6-7.5
	45	195/45R16 80V			581	6-7.5
		205/45R16 83V			589	6.5-7.5
	50	195/50R16 84V			603	5.5-7
		205/50R16 87V			611	5.5-7.5
60	55	185/55R16 83V			608	5-6.5
		195/55R16 87V			620	5.5-7
	65	205/55R16 91H			633	5.5-7.5
		205/55R16 91V			631	5.5-7.5
	50	215/55R16 93H			647	6-7.5
		215/55R16 97V		XL	645	6-7.5
70	55	225/55R16 95V	❖		656	6-8
		175/60R16 82H			616	5-6
	60	195/60R16 89H			641	5.5-7
		205/60R16 92H			652	5.5-7.5
	65	215/60R16 95H			665	6-7.5
		215/60R16 99H		XL	664	6-7.5
15	50	215/60R16 99V		XL	664	6-7.5
		225/60R16 98V		❖	676	6-8
	55	205/65R16 95H			672	5.5-7.5
		175/50R15 75H			556	5-6
	65	195/50R15 82V			577	5.5-7
		175/55R15 77V			571	5-6
70	55	185/55R15 82H			584	5-6.5
		185/55R15 82V			583	5-6.5
	65	195/55R15 85H			594	5.5-7
		195/55R15 85V			593	5.5-7

Inch	Series	Dimensions	Pattern	RF/XL	Overall Diameter (mm)	Approved Rim Width (inch)	
15	60	155/60R15 74H			567	4.5-5.5	
		165/60R15 77H			579	4.5-6	
		175/60R15 81H			591	5-6	
		185/60R15 84H			603	5-6.5	
		185/60R15 88H		XL	604	5-6.5	
	65	195/60R15 88H			615	5.5-7	
		205/60R15 91H			627	5.5-7.5	
		145/65R15 72H			569	4-5	
		175/65R15 84H			609	5-6	
		185/65R15 88H			619	5-6.5	
14	55	185/65R15 88T			619	5-6.5	
		195/65R15 91H			633	5.5-7	
		195/65R15 91T			632	5.5-7	
		195/65R15 91V			633	5.5-7	
		195/65R15 95V		XL	631	5.5-7	
	60	205/65R15 94H			646	5.5-7.5	
		205/65R15 99H		XL	647	5.5-7.5	
		165/55R14 72H			538	4.5-6	
65	55	165/60R14 75T			554	4.5-6	
		185/60R14 82H			578	5-6.5	
	60	195/60R14 86H			589	5.5-7	
		155/65R14 75T			558	4.5-5.5	
		165/65R14 79T			570	4.5-6	
13	70	175/65R14 82H			584	5-6	
		175/65R14 82T			584	5-6	
		185/65R14 86H			596	5-6.5	
		185/65R14 86T			596	5-6.5	
		195/65R14 89H			609	5.5-7	
	75	60	165/70R14 81T			589	4-5.5
			165/70R14 85T		XL	588	4-5.5
		65	175/70R14 84H			601	4.5-6
			175/70R14 84T			601	4.5-6
			185/70R14 88H			618	4.5-6
80	65	185/70R14 88T			618	4.5-6	
		195/70R14 91H			631	5-6.5	
	70	175/70R13 82T			576	4.5-6	

XL = Extra Load ❖ = ES32A Available size



Extreme Mud Terrain Radial

**GEOLANDAR**



SPEED RANGE

N/Q

20  
inch

17  
inch

16  
inch

OFF Road



Mileage



Durability



Mud



Dirt

Pattern No. G005

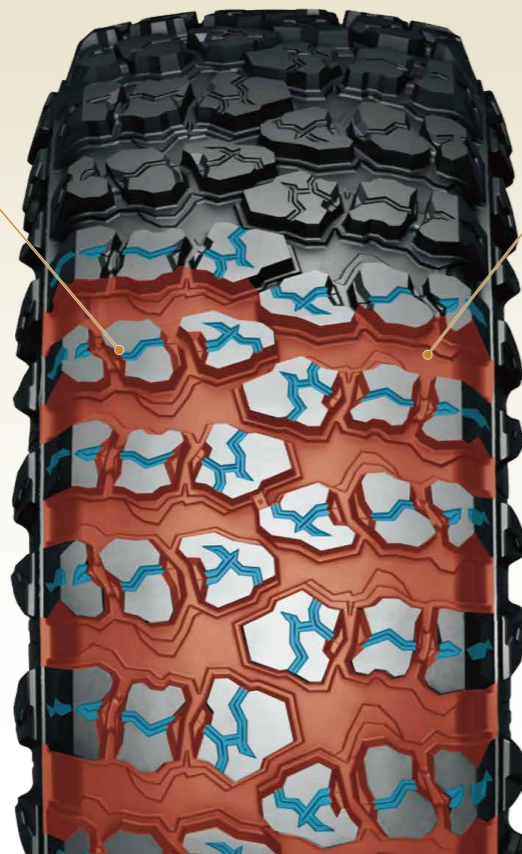
Wide Lug Groove and Recess in Sipes

Benefit

- Extreme off road traction
- Traction of slippery surface

Recess in Sipes

Recess in Sipes is YOKOHAMA key technology from A/T-S and Super Digger V2.



Wide Lug Groove

Wide Lug Groove satisfied with Extreme Off Road Traction.



“Nature ROCK concept” Tread Pattern

New aggressive Block Pattern contribute to Extreme Off Road performance.



Nature Rock Concept Design

Symmetric tread pattern



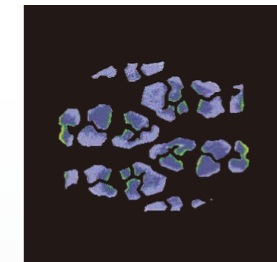
Profile and Contact Shape

Extra Wide contact shape : Better off road traction and Mileage.

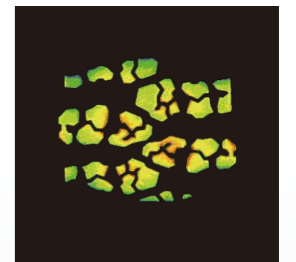
Benefit

- Long Mileage
- Better Traction

GEOLANDAR X-MT



Partial Load



Image

Full Load

Construction

Extra Tick sidewall and protector  
Anti-side cut performance

Extra Wide Tread

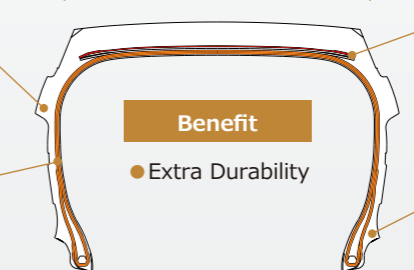
Nylon Full Cover  
A nylon full cover improves tread area damage

3PLY construction

Benefit

- Extra Durability

Rim protector



GEOLANDAR X-MT

Pattern No. G005

Inch	Series	Dimensions	Side	Overall Diameter (mm)	Approved Rim Width (inch)
20		35X12.50R20 LT 121Q	RBL	884	8.5-11
17		35X12.50R17 LT 121Q	RBL	883	8.5-11
		37X13.50R17 LT 121Q	RBL	933	8.5-11
		40X13.50R17 LT 121Q	RBL	1008	8.5-11

Inch	Series	Dimensions	Side	Overall Diameter (mm)	Approved Rim Width (inch)
16	75	LT265/75R16 112/109Q	RBL	807	7-9
		650R16 97/93Q	RBL	764	4.5-6
		7.00R16C 108/106N	RBL	776	4.5-6
		7.50R16C 116/114N	RBL	803	5-6.5

RBL = Raised Black Letter

AMAZING TRACTION

GEOLANDAR M/T G003



Pattern No. G003

**SPEED RANGE** N/Q/S

SUV

20 inch 18 inch 17 inch 16 inch 15 inch

OFF Road

Silence Even wear Mileage Durability Mud Dirt

Side design

Tread design extended to Side : Appearance, Durability and Off road traction.

AGGRESSIVE SIDE BLOCK



- Benefit**
- Appearance
  - Off road traction
  - Durability

All sizes are Raised Black Letter

INTEGRATED DESIGN CONCEPT



Profile & Construction

High-rigidity 3-ply Construction

Ensuring excellent steering stability and side-cut resistance.

Special sidewall construction

Enhancing steering stability and side-cut resistance.

Wide tread

Full Nylon Cover

Preventing damage from reaching the bottom of the groove, improving durability.

Large-size Rim Protector

Protecting the wheels and keeping mud from getting out between the tires and rims.

Tread Pattern

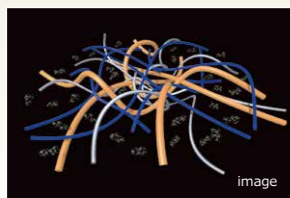
New aggressive Block Pattern contribute to better performance.

Optimized Lug Groove

Traction

Tread Compound

New High Hardness Compound contribute to longer mileage, Anti-cut & Chipping, Better Handling and off road traction.



Benefit

- Wear resistance
- Cut & Chipping resistance
- Handling and Off road traction



Optimized Sipes

Traction

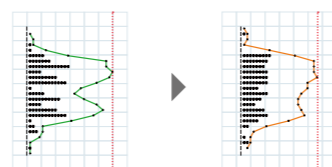
Mud and Stone Ejector

Off Road

Low Noise

Pitch variation positively works for pattern noise because of dispersed pitch and low peak noise.

New Pitch Variation



GEOLANDAR M/T+ GEOLANDAR M/T G003

GEOLANDAR M/T G003

Pattern No. G003

Inch	Series	Dimensions	Side	Overall Diameter (mm)	Approved Rim Width (inch)
20	55	LT275/55R20 120/117Q	RBL	820	8-9.5
		LT285/55R20 122/119Q	RBL	827	8.5-10
		LT295/55R20 123/120Q	RBL	839	8.5-10.5
		LT305/55R20 121/118Q	RBL	849	9-11
	60	LT275/60R20 123/120Q	RBL	847	8-9.5
		LT285/60R20 125/122Q	RBL	858	8.5-10
		LT295/60R20 126/123Q	RBL	866	8.5-10.5
		LT315/60R20 125/122Q	RBL	890	9.5-11
		LT275/65R20 126/123Q	RBL	872	8-9.5
	65	LT295/65R20 126/123Q	RBL	896	8.5-10.5
		33X12.50R20 LT 114Q	RBL	830	8.5-11
		35X11.50R20 LT 124Q	RBL	887	8-10.5
35X12.50R20 LT 121Q		RBL	882	8.5-11	
37X12.50R20 LT 126Q		RBL	933	8.5-11	
37X13.50R20 LT 127Q		RBL	933	8.5-11	
LT275/65R18 123/120Q		RBL	822	8-9.5	
18	65	LT285/65R18 125/122Q	RBL	833	8.5-10
		LT275/70R18 125/122Q	RBL	842	7-9
	70	LT285/70R18 127/124Q	RBL	862	7.5-9.5
		LT295/70R18 129/126Q	RBL	880	7.5-10
		LT305/70R18 126/123Q	RBL	885	8-10
		LT315/70R18 127/124Q	RBL	904	8-10.5
		33X12.50R18 LT 118Q	RBL	828	8.5-11
		35X12.50R18 LT 123Q	RBL	885	8.5-11
		LT225/65R17 107/103Q	RBL	730	6.5-8
		LT265/65R17 120/117Q	RBL	779	8-9.5
70	LT245/70R17 119/116Q	RBL	783	6.5-8	
	LT265/70R17 121/118Q	RBL	810	7-9	
	LT275/70R17 121/118Q	RBL	824	7-9	
	LT285/70R17 121/118Q	RBL	835	7.5-9.5	
	LT295/70R17 121/118Q	RBL	852	7.5-10	
	LT245/75R17 121/118Q	RBL	806	6.5-8	
	LT225/75R17 107/103Q	RBL	730	6.5-8	

Inch	Series	Dimensions	Side	Overall Diameter (mm)	Approved Rim Width (inch)	
17	75	LT255/75R17 111/108Q	RBL	820	6.5-8.5	
		LT285/75R17 121/118Q	RBL	866	7.5-9.5	
	80	LT235/80R17 120/117Q	RBL	815	6-8	
		LT255/80R17 121/118Q	RBL	845	6.5-8.5	
	16	70	33X12.50R17 LT 120Q	RBL	829	8.5-11
			35X12.50R17 LT 121Q	RBL	882	8.5-11
			37X12.50R17 LT 124Q	RBL	934	8.5-11
			40X13.50R17 121Q	RBL	1008	8.5-11
			LT215/70R16 100/97Q	RBL	714	5.5-7
			LT305/70R16 124/121Q	RBL	840	8-10
75	LT225/75R16 115/112Q	RBL	750	6-7.5		
	LT245/75R16 120/116Q	RBL	774	6.5-8		
	LT265/75R16 123/120Q	RBL	810	7-9		
	LT285/75R16 126/123Q	RBL	843	7.5-9.5		
	LT315/75R16 127/124Q	RBL	883	8-10.5		
	85	185/85R16 105/103N LT	RBL	722	4.5-6	
	LT235/85R16 120/116Q	RBL	815	6-7.5		
	LT255/85R16 123/120Q	RBL	843	6.5-8		
15	75	195R16C 104/102Q	RBL	715	5-6	
		205R16C 110/108Q	RBL	738	6-7.5	
		650R16 97/93Q LT	RBL	762	4.5-6	
		LT215/75R15 100/97Q	RBL	710	5.5-7	
		LT235/75R15 104/101Q	RBL	741	6-8	
		80	195/80R15 96S	RBL	693	5-6.5
		30X9.50R15 LT 104Q	RBL	756	6.5-8.5	
		31X10.50R15 LT 109Q	RBL	778	7-9	
		32X11.50R15 LT 113Q	RBL	806	8-10	
		33X12.50R15 LT 108Q	RBL	827	8.5-11	
35X12.50R15 LT 113Q	RBL	879	8.5-11			

RBL = Raised Black Letter





Adventure More.

# GEOLANDAR A/T4

New



SPEED RANGE

S/R/N

20 inch 18 inch 17 inch 16 inch 15 inch

ON & OFF Road



Wet



Silence



Comfort



Mileage



Dirt

Pattern No. G018

## Aggressive Block Tread Pattern

New aggressive block pattern offers good Off-road traction on various surfaces, anti-cut and chipping and low pattern noise

### 2 in 1 Center Blocks

- Good Traction
- Anti-cut and chipping

### Zig-Zag Deep Grooves

- Good Off-road and Wet Traction



### Deep & Wide Shoulder Grooves

- Good Off-road and Snow traction



### Vertical Protrusions in Void Area

- Good Mud & Snow Traction
- Prevent Biting Mud & Rocks



### Single pitch shoulder blocks

- Reduce Pattern Noise
- Make Comfort Ride

### Deep Wavy Sipes

- Good Traction on Wet Road



### Optimized Recess

- Good Traction on Wet and Snow Road



## Contact Shapes

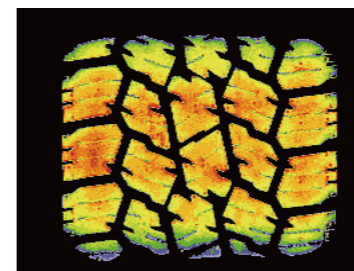
### GEOLANDAR A/T4

#### Contact Shape

- Lug block is firmly grounded

#### Feature

- More Traction & Tread Life



## Compound Technology

Compound contributes to longer tread life, preventing cut & Chipping, Better Durability (Low heat generation).



Triple Polymer

## 2-in-1 Dual Sidewall Design

The 2-in-1 Dual Side Blocks lasting from tread blocks enhance durability and off-road traction. Additionally, the large side blocks offer aggressive appearance.

### 2 in 1 Large Side Blocks

- Durability & Good Off-road Traction
- Aggressive Appearance

### GEOLANDAR Logo

- Good Visibility



Serial side



another side

### GEOLANDAR A/T4 Pattern No. G018

Inch	Series	Dimensions	Side	Overall Diameter (mm)	Approved Rim Width (inch)
20	55	LT275/55R20 120/117S	RBL	810	8-9.5
		LT265/60R20 121/118S	RBL	826	8-9.5
	60	LT275/60R20 123/120S	RBL	838	8-9.5
		LT285/60R20 125/122S	RBL	850	8.5-10
		LT325/60R20 126/123S	RBL	901	9.5-11.5
65	LT275/65R20 126/123S	RBL	866	8-9.5	
	33X12.50R20 LT 114S	RBL	826	8.5-10	
	35X12.50R20 LT 121R	RBL	882	8.5-10.5	
18	60	LT265/60R18 119/116S	RBL	775	8-9.5
		LT265/65R18 122/119S	OWL	801	8-9.5
	65	LT275/65R18 123/120S	OWL	815	8-9.5
		LT285/65R18 125/122S	RBL	827	8.5-10
		LT265/70R18 124/121S	RBL	829	7-9
70	LT275/70R18 125/122S	OWL	848	7-9	
	65	LT225/65R17 107/103S	RBL	730	6.5-8
		LT245/65R17 111/108S	RBL	750	7-8.5
		LT265/65R17 120/117S	OWL	776	8-9.5

Inch	Series	Dimensions	Side	Overall Diameter (mm)	Approved Rim Width (inch)
17	70	LT245/70R17 119/116S	OWL	776	6.5-8
		LT265/70R17 121/118S	OWL	809	7-9
		LT275/70R17 124/121S	OWL	824	7-9
		LT285/70R17 121/118S	OWL	837	7.5-9.5
		LT315/70R17 121/118S	RBL	874	8-10.5
75	LT245/75R17 121/118S	OWL	806	6.5-8	
	80	LT235/80R17 120/117S	RBL	815	6-8
16	70	LT245/70R16 118/115R	RBL	750	6.5-8
		LT265/70R16 121/118S	OWL	778	7-9
	75	LT225/75R16 115/112S	RBL	744	6-7.5
85	75	LT245/75R16 120/116S	OWL	774	6.5-8
		LT265/75R16 123/120S	OWL	808	7-9
	85	LT285/75R16 126/123S	OWL	834	7.5-9.5
		185/85R16 105/103N	WL	720	4.5-5
		LT235/85R16 120/116S	RBL	812	6-7.5
15		31X10.50R15 LT 109S	OWL	781	7-8.5

RBL = Raised Black Letter OWL = Outlined White Letter WL = White Letter



## The all new Performance A/S for Crossover SUV

# GEOLANDAR X-CV



SPEED RANGE

W/V/H/T

22 inch

21 inch

20 inch

19 inch

18 inch

ON Road



Wet



Silence



Comfort



Mileage



Fuel Saving

Pattern No. G057

## Tread Pattern technology

### Asymmetric pattern

Asymmetric pattern -3 rib design and In/Out shoulder block.

- WET • Snow • Low Noise

### 4 wide straight groove

4 Wide straight groove effects Wet and Hydroplaning.

- WET

#### Benefit

- Better traction and noise
- Traction at slippery surface



### 2-3D Combination Sipes

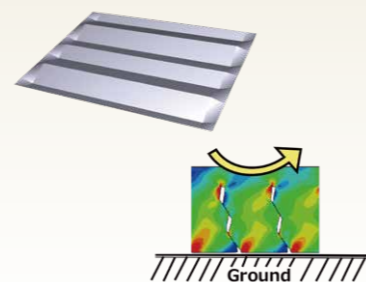
2D,3D Combination Sipes are good for traction and Mileage.

- WET • Snow



■ 2D sipe ■ 3D sipe

### 3D sipes



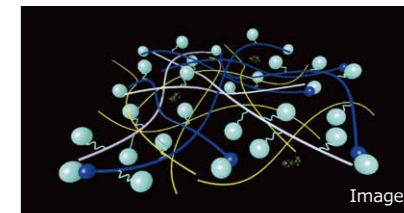
#### Benefit

- Better wet and snow traction
- Better mileage

## Compound Technology

The feature of Tread compound is good performance balance wet and snow.

- Micro Silica Keeps stability at dry performance
- Silica End-locked polymer is not only improving silica dispersion for wet performance but also keeping compound soft for good snow performance. Additionally this polymer reduce energy loss of compound for Rolling Resistance.



Image

#### Benefit

- Wet and Snow performance
- Low Rolling resistance

## Side design



- Dented logo
- Sidewall 2PLY construction

#### Benefit

- Even Wear
- Long Mileage

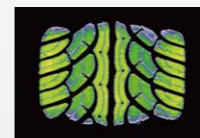
All sizes are Black Letter



## Profile and Contact Shape

Wide and flat contact shape- Even wear Better Mileage.

Image



PARADA Spec-X



GEOLANDAR X-CV

#### Benefit

- Even Wear
- Long Mileage

## 5 Pitch Variation

5 Pitch Variation block enable lower noise.

#### 5 Pitch Variation



#### Benefit

- Lower noise

## GEOLANDAR X-CV

Pattern No. G057

Inch	Series	Dimensions	Pattern	RF/XL	Side	Overall Diameter (mm)	Approved Rim Width (inch)
22	35	265/35R22 102W		XL	BL	746	9-10.5
		285/35R22 106W		XL	BL	761	9.5-11
	40	265/40R22 106W		XL	BL	770	9-10.5
		275/40R22 108W		XL	BL	778	9-11
		285/40R22 110W		XL	BL	790	9.5-11
45	255/45R22 107W		XL	BL	791	8-9.5	
21	35	295/35R21 107W		XL	BL	738	10-11.5
		315/35R21 111W		XL	BL	753	10.5-12.5
	40	265/40R21 105W		XL	BL	746	9-10.5
		275/40R21 107W		XL	BL	752	9-11
		285/40R21 109W		XL	BL	762	9.5-11
295/40R21 111W		XL	BL	767	10-11.5		
315/40R21 115W		XL	BL	783	10.5-12.5		
45	245/45R21 104W		XL	BL	754	7.5-9	
			BL	BL	767	8.5-10	
	275/45R21 110W		XL	BL	780	8.5-10.5	
			XL	BL	788	9-10.5	
50	255/50R21 106W			BL	789	7-9	
20	40	275/40R20 106W		XL	BL	726	9-11
		295/40R20 110W		XL	BL	743	10-11.5
	305/40R20 112W		XL	BL	750	10-12	
			XL	BL	752	10-12	
45	235/45R20 100W		XL	BL	721	7.5-9	
			XL	BL	728	7.5-9	
	245/45R20 103W		XL	BL	728	7.5-9	
			XL	BL	735	8-9.5	
			XL	BL	744	8.5-10	
275/45R20 110W		XL	BL	752	8.5-10.5		

Inch	Series	Dimensions	Pattern	RF/XL	Side	Overall Diameter (mm)	Approved Rim Width (inch)	
20	45	285/45R20 112W		XL	BL	761	9-10.5	
		235/50R20 104W		XL	BL	744	6.5-8.5	
50	255/50R20 109W			XL	BL	762	7-9	
				XL	BL	770	7.5-9.5	
	275/50R20 113W		XL	BL	781	7.5-9.5		
				BL	790	7-9		
			XL	BL	783	7-9		
60	265/60R20 112H		Лб		BL	829	7.5-9.5	
19	45	235/45R19 99W			XL	BL	697	7.5-9
		255/50R19 107W			XL	BL	735	7-9
	50	265/50R19 110W			XL	BL	745	7.5-9.5
		275/50R19 112W			XL	BL	758	7.5-9.5
		235/55R19 105W			XL	BL	740	6.5-8.5
55	255/55R19 111W			XL	BL	762	7-9	
			Ж		BL	779	7.5-9.5	
	265/55R19 109W			BL	780	7.5-9.5		
				BL	780	7.5-9.5		
60	235/60R19 103W			BL	764	6.5-8.5		
	255/55R18 109W			XL	BL	733	7-9	
18	55	235/60R18 107W			XL	BL	739	6.5-8.5
		65	255/65R18 111H		Ц		BL	786
	70	265/70R18 116T		Лб		BL	822	7-9
75	245/75R18 112T		Лб		BL	818	6.5-8	

XL = Extra Load BL = Black Letter Лб = G057K Available size Ж = G057H Available size Ц = G057K Available size

Long-lasting comfort, everywhere you go.

# GEOLANDAR H/T G056



SPEED RANGE

V/H/R/T/S

22 inch 21 inch 20 inch 19 inch 18 inch 17 inch 16 inch 15 inch

ON Road

Pickup Truck



Wet

Comfort

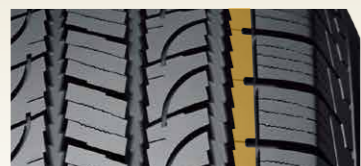
Mileage

Pattern No. G056

## Realizes 13% improved handling performance

For handling performance, the yaw angle at lane change has been lowered by 13%. YOKOHAMA achieved this by enhancing tread pattern stiffness through an interlocking shoulder block and 3-D sipes. This means stable handling even with SUVs / Pick-ups, which often carry baggage.

Interlocking shoulder block



3-D sipes

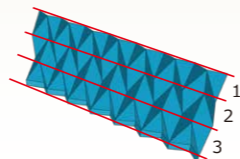
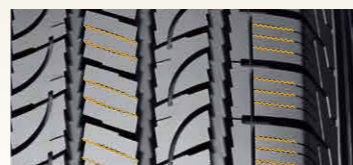


Image of 3-D sipe structure

## Pattern noise is 0.6dB lower

A five-pitch variation reduces disturbing noise, which interrupts a comfortable driving experience.

Image of five-pitch variation



## Achieves 3% shorter distance in terms of wet braking performance

A newly developed tread pattern design with four main grooves improves drainage performance.

Deep depth four main grooves



### GEOLANDAR H/T G056

Pattern No. G056

Inch	Series	Dimensions	Pattern	RF/XL	Side	Overall Diameter (mm)	Approved Rim Width (inch)
22	45	285/45R22 114H		XL	RBL	814	9-10.5
		50	P275/50R22 111H		RBL	834	7.5-9.5
21	50	275/50R21 113V		XL	RBL	811	7.5-9.5
		20	50	285/50R20 112V		RBL	794
55	60	275/55R20 113H			BL	808	7.5-9.5
		245/60R20 107H		RBL	801	7-8.5	
LT265/60R20 121/118R	60	245/60R20 107H		RBL	833	8-9.5	
		P275/60R20 114H		RBL	836	7.5-9.5	
65	LT275/65R20 126/123S	245/60R20 107H		RBL	870	8-9.5	
		19	55	265/55R19 109V		RBL	774
60	P255/60R19 108H	265/55R19 109V		RBL	789	7-9	
		18	60	P245/60R18 104H		RBL	751
255/60R18 108H	18	255/60R18 108H	■		RBL	757	7-9
		255/60R18 112V		XL	RBL	762	7-9
P255/60R18 107H	18	P255/60R18 107H	◆		RBL	757	7-9
		265/60R18 110H		RBL	773	7.5-9.5	
275/60R18 113H	65	275/60R18 113H		RBL	787	7.5-9.5	
		285/60R18 116H		RBL	800	8-10	
P255/65R18 109T	65	P255/65R18 109T		RBL	790	7-9	
		P265/65R18 112T		RBL	800	7.5-9.5	
275/65R18 116H	70	275/65R18 116H		OWL	814	7.5-9.5	
		P255/70R18 112H		RBL	814	6.5-8.5	
P265/70R18 114S	17	P265/70R18 114S		OWL	828	7-9	
		65	P245/65R17 105T		RBL	751	7-8.5
255/65R17 114H	17	255/65R17 114H		XL	RBL	764	7-9
		P255/65R17 108T		OWL	765	7-9	
265/65R17 112H	70	265/65R17 112H		RBL	777	7.5-9.5	
		P265/65R17 110T		OWL	776	7.5-9.5	
275/65R17 115H	80	275/65R17 115H		RBL	788	7.5-9.5	
		285/65R17 116H		RBL	799	8-10	
225/70R17 108T	70	225/70R17 108T		XL	RBL	744	6-7.5
		P235/70R17 108T		XL	OWL	761	6-8
P245/70R17 108H		OWL	776	6.5-8			

Inch	Series	Dimensions	Pattern	RF/XL	Side	Overall Diameter (mm)	Approved Rim Width (inch)
17	70	P255/70R17 110T			OWL	788	6.5-8.5
		265/70R17 115H			OWL	807	7-9
265/70R17 115S	75	265/70R17 115S			RBL	809	7-9
		LT225/75R17 116/113S			RBL	779	6-7.5
P235/75R17 108S	16	P235/75R17 108S			OWL	791	6-8
		65	255/65R16 109H		RBL	734	7-9
P255/65R16 106T	70	P255/65R16 106T			OWL	737	7-9
		P235/70R16 104T			OWL	735	6-8
245/70R16 111H	75	245/70R16 111H		XL	RBL	750	6.5-8
		P245/70R16 106H			OWL	750	6.5-8
255/70R16 111H	15	255/70R16 111H			RBL	763	6.5-8.5
		P255/70R16 109T			OWL	765	6.5-8.5
265/70R16 112H	75	265/70R16 112H			RBL	775	7-9
		P265/70R16 111T			OWL	776	7-9
275/70R16 114H	17	275/70R16 114H			RBL	790	7-9
		P225/75R16 106T		XL	RBL	743	6-7.5
P235/75R16 109T	75	P235/75R16 109T		XL	OWL	760	6-8
		P245/75R16 109T			OWL	773	6.5-8
265/75R16 116H	15	265/75R16 116H			RBL	801	7-9
		P265/75R16 114T			OWL	803	7-9
215/70R15 98H	70	215/70R15 98H			RBL	679	5.5-7
		255/70R15 108H			RBL	735	6.5-8.5
255/70R15C 112S	75	255/70R15C 112S			RBL	740	6.5-8.5
		265/70R15 112H			RBL	750	7-9
235/75R15 109H	80	235/75R15 109H		XL	RBL	734	6-8
		P235/75R15 108T		XL	OWL	736	6-8
215/80R15 102S	15	215/80R15 102S			RBL	726	5.5-7
		30X9.50R15 104S			OWL	749	6.5-7.5
31X10.50R15 109S		OWL	772	7-8.5			

XL = Extra Load  
 ■ = G056A Available size and this is OE  
 ◆ = G056B Available size and this is OE  
 BL = Black Letter  
 RBL = Raised Black Letter  
 OWL = Outlined White Letter

Transcend Time and Distance.

# GEOLANDAR CV G058



**SPEED RANGE**

V/H/S

SUV

20 inch 19 inch 18 inch 17 inch 16 inch 15 inch

**ON Road**

Wet Comfort Mileage Fuel Saving

Pattern No. G058

## Tread Pattern technology

All-New Symmetric pattern contributes to below performance.

### Sipe based Symmetric pattern

Sipe based symmetric pattern increase traction and reduce uneven wear.

- WET
- Snow
- Low Noise

### 4 Combination main grooves

#### Combination main groove effects

- Center : Hydroplaning and wet traction
- Shoulder : Hydroplaning, wet and snow traction
- WET
- Snow

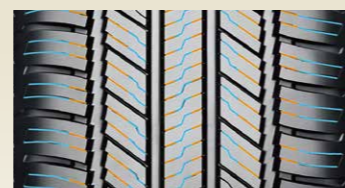
**Benefit**

- Better traction and noise
- Traction at slippery surface

### 2-3D Combination Sipes

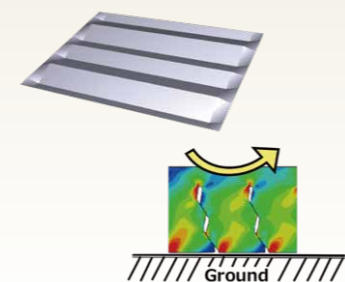
2D,3D Combination Sipes are good for traction and Mileage.

- WET
- Snow



2D sipe 3D sipe

### 3D sipes



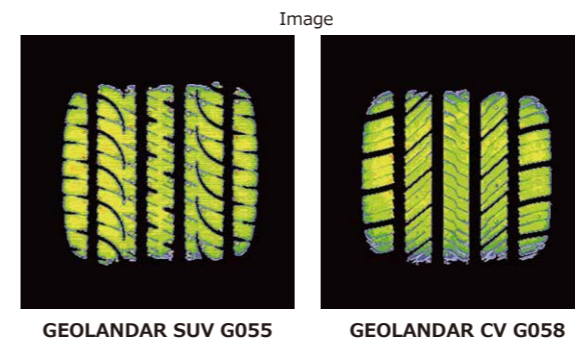
**Benefit**

- Better wet and snow traction
- Better mileage

## Profile and Contact Shape

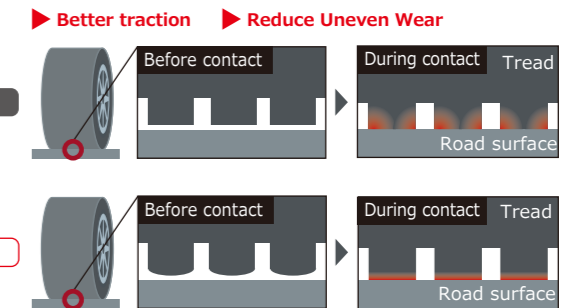
Wide and flat contact shape- Even wear Better Mileage.  
Adopts Round Profile for each rib blocks- Better traction.

Each Rib Blocks have Round Profile (Shoulder and 2<sup>nd</sup> rib)



GEOLANDAR SUV G055 GEOLANDAR CV G058

- Benefit**
- Even Wear
  - Better traction



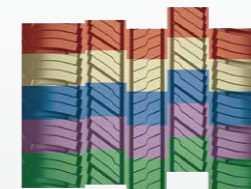
## 5 Pitch Variation

5 Pitch Variation block contributes to lower noise.

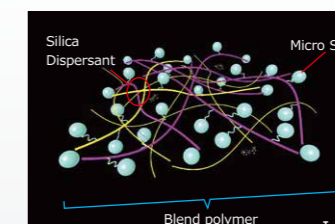
### 5 Pitch Variation

**Benefit**

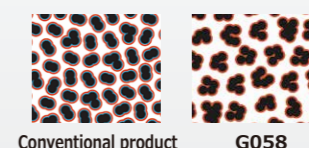
- Lower noise



## New Compound Technology



- Micro Silica
- Improved Silica dispersion



- Micro Silica
- Silica Dispersant
- Blend polymer for wet
- Blend polymer for snow

**Benefit**

- Wet and Snow performance
- Low Rolling resistance

### GEOLANDAR CV G058 Pattern No. G058

Inch	Series	Dimensions	RF/XL	Side	Overall Diameter (mm)	Approved Rim Width (inch)				
20	50	245/50R20 102V		BL	753	7-8.5				
		255/50R20 109V	XL	BL	765	7-9				
		265/50R20 107V		BL	771	7.5-9.5				
55		235/55R20 102V		BL	764	6.5-8.5				
		255/55R20 110V	XL	BL	792	7-9				
		235/50R19 103V	XL	BL	721	6.5-8.5				
19	50	255/50R19 107V	XL	BL	739	7-9				
		225/55R19 99V		BL	731	6-8				
		235/55R19 105V	XL	BL	742	6.5-8.5				
245/55R19 103H				BL	755	7-8.5				
							245/55R19 103V	BL	754	7-8.5
							255/60R19 113V	XL	BL	791
18	50	215/50R18 92V		BL	672	6-7.5				
		225/50R18 95V		BL	686	6-8				
		235/50R18 97V		BL	694	6.5-8.5				
55		215/55R18 99V	XL	BL	694	6-7.5				
		225/55R18 98V		BL	705	6-8				
		235/55R18 100V		BL	712	6.5-8.5				
255/55R18 109V			XL	BL	735	7-9				
							225/60R18 100H	BL	725	6-8
							235/60R18 107V	XL	BL	738
245/60R18 105H				BL	749	7.5-8.5				
							245/60R18 105V	BL	751	7.5-8.5
							265/60R18 110V	BL	776	7.5-9.5
65		225/65R18 103H		BL	748	6-8				

Inch	Series	Dimensions	RF/XL	Side	Overall Diameter (mm)	Approved Rim Width (inch)				
18	65	235/65R18 106V		BL	763	6.5-8.5				
		255/65R18 111H		BL	788	7-9				
17	55	215/55R17 94V		BL	668	6-7.5				
		225/55R17 97V		BL	681	6-8				
		235/55R17 99H		BL	692	6.5-8.5				
60		215/60R17 96H		BL	692	6-7.5				
		225/60R17 99H		BL	701	6-8				
		235/60R17 102V		BL	713	6.5-8.5				
255/60R17 106H				BL	739	7-9				
							215/65R17 99H	BL	711	6-7.5
							225/65R17 102H	BL	723	6-8
235/65R17 108V	XL	BL	739	6.5-8.5						
245/65R17 107H		BL	749	7.5-8.5						
70		215/70R17 101H		BL	733	5.5-7				
		215/60R16 95V		BL	665	6-7.5				
16	60	235/60R16 100V		BL	688	6.5-8.5				
		215/65R16 98H		BL	685	6-7.5				
		225/65R16 100H		BL	696	6-8				
70		215/70R16 100H		BL	708	5.5-7				
		225/70R16 103H		BL	721	6-7.5				
		235/70R16 106H		BL	738	6-8				
15	70	205/70R15 96H		BL	667	5-7				
		225/70R15 100H		BL	699	6-7.5				
		195/80R15 96S		BL	692	5-6.5				

XL = Extra Load BL = Black Letter

## BluEarth-Van RY55

## PARADA Spec-X



SPEED RANGE

H/T/R/S/P/N/L

17 inch 16 inch 15 inch 14 inch 13 inch 12 inch



Pattern No. RY55



SPEED RANGE

V/H

24 inch 23 inch 22 inch 20 inch 19 inch 18 inch 17 inch



Pattern No. PA02

### The most long-lasting, tough & efficient Earth-Friendly Van tire ever

#### The all new Powerful RY55 Tread Design

#### Multiple Triangle Block

High rigidity and proper edge volume Safety, Drainage on Wet roads.

#### 3 Pitch Tread Pattern

Low pattern noise, Resists uneven wear.



#### Extra Powerful Profile

High rigidity and tough, Resists uneven wear.

#### Multiple aggressive Shoulder

Combination of deep lugs and sipes Stability, Evacuation, Resists uneven wear.

#### Wide Straight Grooves

Anti-Hydro, Water draining on Wet braking Straight driving and handling.

### BluEarth-Van RY55 Pattern No. RY55

Inch	Series	Dimensions	Pattern	Overall Diameter (mm)	Approved Rim Width (inch)	
17	55	225/55R17C 109/107H		680	6-8	
		215/60R17C 109/107T		690	6-7.5	
		235/60R17C 109/107T		714	6.5-7.5	
16	60	195/60R16C 99/97H		640	5.5-7	
		215/60R16C 103/101T		664	6-7.5	
		65	195/65R16C 104/102T		660	5.5-6
			205/65R16C 103/101H		672	5.5-7.5
			205/65R16C 107/105T		672	5.5-7.5
		215/65R16C 106/104T		686	6-7.5	
	215/65R16C 109/107T		686	6-7.5		
	225/65R16C 112/110H		698	6-7		
	225/65R16C 112/110T		698	6-7		
	235/65R16C 115/113R		712	6.5-7.5		
	235/65R16C 121/119R		712	6.5-7.5		
	70	215/70R16C 108/106S		708	5.5-7	
75	185/75R16C 104/102S		684	5-6		
	195/75R16C 107/105T		698	5-6		
	195/75R16C 110/108T		698	5-6		
	205/75R16C 110/108R		714	5.5-6.5		
	205/75R16C 110/108T		714	5.5-6.5		
	205/75R16C 113/111R		714	5.5-6.5		
	215/75R16C 113/111R		728	5.5-7		
	215/75R16C 116/114R		728	5.5-7		

Inch	Series	Dimensions	Pattern	Overall Diameter (mm)	Approved Rim Width (inch)
16	75	225/75R16C 121/120R		744	6-7
15	65	205/65R15C 102/100T		647	5.5-7.5
		215/65R15C 104/102T		661	6-7
70	195/70R15C 104/102S		655	5-6	
	205/70R15C 106/104S		669	5.5-6.5	
	215/70R15C 109/107S		683	5.5-7	
	225/70R15C 112/110S		697	6-7	
	75	185/75R15 106/104L	≡	659	4.5-6
14	195R15C 106/104S		693	5-6	
	175R14C 99/98R	Y	634	4.5-5.5	
	185R14C 102/100S		650	5-6	
	195R14C 106/104S		666	5-6	
13	80	145/80R13 88/86N	≡	562	3.5-4.5
		155/80R13 90/89N	≡	578	4-5
	165/80R13 94/93N	≡	594	4-5	
	155R13 90/89P	Y	578	4-5	
	165R13C 94/92P	Y	596	4-5	
12	80	175R13C 97/95P	Y	610	4.5-5.5
		145/80R12 86/84N	≡	537	3.5-4.5
		155R12C 88/86N	Y	553	4-5

≡ = RY55B Available size Y = RY818 Available size

### PARADA Spec-X Pattern No. PA02

Inch	Series	Dimensions	RF/XL	Overall Diameter (mm)	Approved Rim Width (inch)
24	35	295/35R24 110V	RF	820	10-11.5
		305/35R24 112V	RF	830	10-12
		315/35R24 114V	RF	835	10.5-12.5
		40	285/40R24 112V	RF	839
45	325/45R24 116V	RF	899	10-12	
	23	35	285/35R23 107V	RF	789
40	285/40R23 111V	RF	814	9.5-11	
	22	30	265/30R22 97V	RF	726
285/30R22 101V			RF	733	9.5-10.5
35	265/35R22 102V	RF	747	9-10.5	
	285/35R22 106V	RF	765	9.5-11	
	40	265/40R22 106V	RF	775	9-10.5
45	285/40R22 110V	RF	789	9.5-11	
	305/40R22 114V	RF	805	10-12	
	285/45R22 114V	RF	818	9-10.5	
50	305/45R22 118V	RF	832	9.5-11.5	
	325/50R22 116V	RF	879	9-11.5	
20	40	255/40R20 101V	RF	714	8.5-10

Inch	Series	Dimensions	RF/XL	Overall Diameter (mm)	Approved Rim Width (inch)
20	40	275/40R20 106V	RF	727	9-11
	45	245/45R20 99V		729	7.5-9
50	55	255/45R20 105V	RF	740	8-9.5
		275/45R20 110V	RF	759	8.5-10.5
		295/45R20 114V	RF	777	9.5-11
50	245/50R20 102V		756	7-8.5	
	255/50R20 109V	RF	763	7-9	
	265/50R20 111V	RF	777	7.5-9.5	
55	285/50R20 112V		794	8-10	
	235/55R20 102V		766	6.5-8.5	
19	55	275/55R20 117V	RF	811	7.5-9.5
		235/55R19 101V		740	6.5-8.5
18	55	235/55R18 100V		714	6.5-8.5
		60	225/60R18 100H		723
65	65	235/60R18 103V		736	6.5-8.5
		245/60R18 105H		749	7-8.5
		235/65R18 106H		762	6.5-8.5
17	65	225/65R17 102H		726	6-8

RF = Reinforced













# Basic Tire Knowledge

## How to Read Tire Size

**205 / 65 R 15 94H**

1 2 3 4 5 6

**165 / R 13C 94/92P**

1 3 4 11 10 5

**235 / 45 ZR 17 97Y**

1 2 7 4 5 6

**P235 / 70 R 17 108S**

12 1 2 3 4 5 6

**31 X 10.50 R 15 109S**

8 9 3 4 5 6

**LT315 / 75 R 16 113Q**

13 8 2 3 4 5 6



### 1 Nominal section width (mm)

This refers to the width of the tire excluding design and lettering on the sidewall, etc.

\*Does not include rim guard.

### 2 Aspect ratio (series,%)

This figure indicates the ratio of a tire's height.

Aspect ratio(%)=

Tire height÷tire width×100

### 3 Construction code

"R" stands for radial structure.

### 4 Nominal rim diameter (inches)

Refers to the diameter of the wheel rim suitable for the tire. The term "tire's inner diameter" is also used.

### 5 Load Index (LI)

An index expressing the maximum load permitted for a tire under established conditions.

### 6 Speed symbol

This indicates the maximum permissible speed in symbols under established conditions.

### 7 Speed category

(ZR: over240km/h)

### 8 Nominal outside diameter (inches)

### 9 Nominal section width (inches)

### 10 Load Index: Single/Dual

### 11 C: Commercial vehicle

Complies with ETRTO(European tire regulations).

### 12 P: Passenger car tire

Complies with TRA(North American tire regulations).

### 13 LT: Light Truck

Complies with JATMA (Japanese tire regulations) or TRA(North American tire regulations).

## Speed Symbol

The speed symbol refers to the maximum speed capability of a tire. It is only valid for a tire that is properly inflated and loaded within the limits of the assigned load index.

Speed symbol	Speed(km/h)
N	140
P	150
Q	160
R	170
S	180
T	190
H	210
V	240
W	270
Y	300
(Y)	Over 300

Speed category	Speed(km/h)
ZR	Over240

## Air Pressures for High Flotation Size Tires and LT-Metric Size Tires

Air pressures for High Flotation size tires and LT-metric size tires are higher than those for passenger car tires in accordance with standards. Since actual operating air pressure varies depending on vehicle size and tire size, please consult with your tire dealer about proper air pressure.

### P-Metric Size Tires

If a letter "P" appears at the beginning of the "tire size," it indicates that the tire is a passenger car tire (designation established by the Tire and Rim Association).

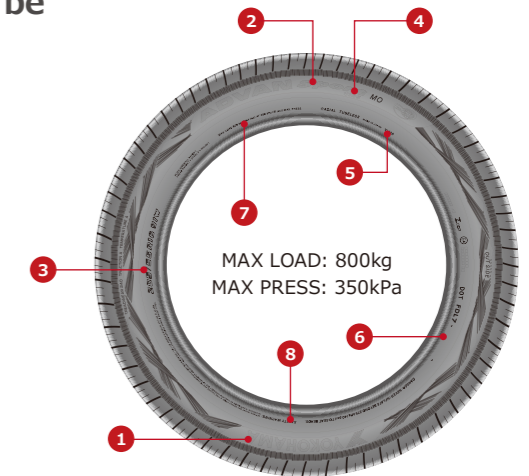
### LT-Metric Size Tires

If the letters "LT" appear at the beginning of the "tire size," it indicates that the tire is a light truck tire (designation established by the Tire and Rim Association).

# Sidewall Information

A variety of information about a tire appears on its sidewall. Knowing how to identify the markings can be useful when choosing a tire.

- 1 YOKOHAMA: Manufacture's name
- 2 ADVAN Sport: Brand Name
- 3 205/55R16 91W: Tire Size Designation
- 4 V105: Tread Pattern Name
- 5 Country of Origin
- 6 Identification Serial Number
- 7 MAX LOAD, MAX PRESS
- 8 Safety Warning



## Asymmetrical tread pattern and specified tire rotation

Tires with a directional pattern need to be mounted according to the indications on the sidewalls to ensure maximum performance.

Make sure you take note of the directional pattern when mounting the tire.

### Unidirectional tread pattern



Tread pattern of V701

### Asymmetrical tread pattern SIDE FACING OUTWARDS (INWARDS)



Tread pattern of V552



Sidewalls indicate whether they should face inwards or outwards.

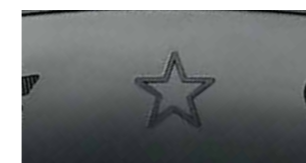


It is vital to take note of the arrow when rotating tires to ensure that the tires are mounted in the correct direction.



## OE approval mark by automakers

Some tires may include a mark of approval from a specific automaker on the sidewall. There is no difference in basic performance if the tires are of the same size and pattern, irrespective of whether the mark is evident or not.



☆=BMW Specification



MO is a Mercedes-Benz approved mark.



N-1 and N-0 are Porsche approved mark.



# About YOKOHAMA

## TIRE

A wide array of high-quality tires developed, manufactured, and sold by YOKOHAMA are earning users' trust in various aspects of society. These range from passenger car tires that add a splash of color to life to truck and bus tires that support people's daily lives and logistics to off-the-road tires at resource development and construction sites, plus tires used in industrial vehicles as well as in agricultural and forestry machinery.

### Passenger Car Tire

In line with various drivers' preferences, YOKOHAMA boasts a tire lineup that meets a diversity of driving scenarios, including tires for sports cars, luxury sedans, sport utility vehicles and dress-up vehicles as well as studless tires. Passenger car tires, which respond to all kinds of driving needs such as riding comfort, handling performance, environmental features and a quiet ride, are the embodiment of YOKOHAMA's technologies.

### Light Truck Tire

Light truck tires must be able to stand up to a variety of conditions and adapt to a range of delivery and transport needs in urban environments. Combining superior grip on wet surfaces with high durability and wear resistance, these tires offer economical efficiency while remaining environmentally friendly, thereby supporting the logistics of peoples' daily lives.



### Truck & Bus Tire

Truck-and-bus tires are required to meet not only basic performance such as fuel economy, durability, and safety, but also superior standards for environmental friendliness and transport efficiency. YOKOHAMA provides these tires to all over the world as part of the company's environmental initiatives. We are developing original new technologies with the theme "Further improvement of environmental performance, to bringing people a more comfortable ride and social friendly." For example, we have developed new compound technologies—which involve highly effective blending of greater amounts of silica with raw materials—as well as cutting-edge blending technologies to greatly improve both fuel economy and tire life. In addition, our proprietary SpiraLoop® belt structure technologies, we have been able to achieve shape retention—an issue with wider tires—by boosting belt construction. YOKOHAMA is paving the way for a new era in logistics with innovative technology and materials development.



### Off-Highway Tire

By offering a line of tires for use by agricultural machinery, construction vehicles, and industrial vehicles, YOKOHAMA helps place such vehicles—from farm tractors and super-large dump trucks to forklifts—on the surest footing possible. We acquired Alliance Tire Group B.V. (ATG) in 2016 and Aichi Tire Industry Co., Ltd. in 2017. ATG is an OHT specialist operating around the world and primarily in Europe and the U.S. Aichi Tire is a trusted pioneer in the field of pneumatic-type cushion tires and active mostly in the Japanese market. In May 2023, Trelleborg Wheel Systems Holding AB (TWS), which has a wide range of product lineup for agricultural machinery, construction vehicles and industrial vehicles and high market share in Europe, joined us. Our YX2023 Mid-term Management Plan outlines steps to further accelerate growth in the OHT sector. We will continue to develop markets and expand our business by leveraging the YOKOHAMA, TRELLEBORG, AICHI, MITAS, ALLIANCE, GALAXY and PRIMEX brands as we work to meet the needs of our customers.



## MULTIPLE BUSINESS

The MB (Multiple Business) Group, YOKOHAMA's diversified business unit, has played significant roles globally over an extended period of time and contributed to the development of various industries such as automobile, oil and gas, mining, construction, aerospace, etc. The MB Group offers a broad range of products including industrial and automotive hoses, couplings, conveyor beltings, marine products, sealing materials, adhesives and aircraft components and more. We continue to strive to provide the best solutions to our customers with innovative technologies and best-in-class quality.

## SPORTS

PRGR is YOKOHAMA's golf products brand. Since its launch in 1983, YOKOHAMA has evolved its golf line over the years under the original concept of golf being "the physical phenomenon of a collision between the club and the ball."

## MOTOR SPORTS



YOKOHAMA participates in a wide range of motorsports events including races and rallies. While achieving a superb legacy in various categories, YOKOHAMA also provides Competition tires to teams in Japan and overseas with excellent results.

Motorsports activities play a vital role in contributing to tire development. The cutting-edge macromolecular and design technologies for tires installed on racing vehicles are being employed in the development of tires sold in the broader market and greatly contribute to improvements to produce high-performance tires. The motorsports arena, marked by fierce competition between the latest technologies, serves as a crucial testing medium for creating tires of the future.

# About YOKOHAMA

## Research and Development

Reliable technology based on world-class research and development is essential for developing and providing YOKOHAMA products that are safe and reliable, while also helping to preserve the environment. At every stage of design, testing and assessment, YOKOHAMA takes a comprehensive multi-faceted approach toward realizing advances in macromolecular and other technologies to make materials and products as beneficial as possible.



### RADIC

RADIC (Research and Development Integrated Center) has been at the core of YOKOHAMA's leading-edge R&D operations since being established in 1991. State-of-the-art instruments such as supercomputers, electron microscopes, ESCA (electron spectroscopy for chemical analysis) systems and a nuclear magnetic resonance spectrometer are used in pursuing materials development and product design and in conducting simulations under various conditions.



### D-PARC

D-PARC (Daigo Proving-ground and Research Center) is YOKOHAMA's comprehensive tire test course facility that includes a speed oval course, steering and stability track, comfort test track with multiple surfaces made of materials sourced from around the world and handling test track simulating winding road conditions.



### TIRE TEST CENTER OF HOKKAIDO

The Tire Test Center of Hokkaido in Asahikawa City, Hokkaido is a vehicle test course for winter tires including studless tires. The sizable grounds, which are roughly four times the size of conventional winter tire test courses, are equipped with various facilities including: approximately one kilometer snow track, ice track, hill climbing track, snow and ice circle, plus handling track. All in all, this course boasts optimal conditions for real vehicle testing under severe winter conditions for the long period stretching from the end of December through the following February, when temperatures are consistently below freezing.



### TIRE TEST CENTER OF ASIA

TIRE TEST CENTER OF ASIA is a large-scale proving ground that uses peripheral road tracks to recreate general roads found around the world, with the overriding aims of raising quality, strengthening performance evaluations, improving quality and enhancing high-speed driving testing of tires for passenger cars, light trucks, and trucks and buses. Special test courses and wet test courses simulating various road conditions enable multi-faceted tests covering all aspects of driving ranging from handling stability, fuel economy and durability to noise, vibration and riding comfort. The proving ground was built adjacent to Yokohama Rubber (Thailand) Co., Ltd., a tire production and sales company in Thailand. This close location enhances the ease of collaboration with production and development divisions and better enables the results of driving and evaluation testing to be applied to the development of new tires.



### YOKOHAMA TEST CENTER of SWEDEN

The YOKOHAMA TEST CENTER of SWEDEN is a vehicle test course with which we have a long-term rental contract with Arctic Falls for winter tire testing. There are various test courses on the grounds, all of which are self-contained. Development of passenger car, tires is conducted here. Temperatures are consistently below freezing over the period of approximately November through April of the following year, enabling winter tire testing with real vehicles over the long term.



# For Your Comfort & Safety

## Tire inflation

- Tire inflation should be done in a safety cage.
- Never inflate beyond 275kPa (2.75bar, 40psi) to seat beads.
- Tire performance may decline when foreign objects or water enter the tire. Before mounting a tire, inspect and remove any foreign objects and water inside of it.
- Periodically drain water from the compressor, otherwise the water may be transferred to the inside of the tire.
- Before inflating air and attaching the valve cap, make sure that no air is leaking from the valve core, the tire fits properly on its rim and no air is leaking from around the valve.

## Tire damage

Never use a tire under the following conditions and replace tires immediately:

- If the tread is worn down to the tread wear indicator
- If breaks in the fabric appear
- If cords or wires are exposed

## Point to note when choosing a tire

- Outer diameter of the wheel should be the same as the inner diameter of the tire.

## Inspect for foreign objects and damage

- Stones, gravel and other foreign objects stuck in the tire treads may damage the tire. Remove foreign objects from the tire treads.
- Such objects and obstacles in the road as potholes, glass, metal, rocks, wood debris, and kerbstones which could damage a tire should be safely avoided.

## Break-in period

- Make sure to break new tires in by driving under 80km/h for no less than 100km in the case of summer tires.

## Points to note regarding tire/rim attachment

- Adjust wheel balance to prevent abnormal vibration and uneven wear.
- Mount tires according to the rotation direction specified on the sidewall as indicated.
- Use a torque wrench to fasten wheel nuts to the specified torque. When using an impact wrench, do not tighten the nuts too tightly. Check with a torque wrench.
- After attaching the wheels to the vehicle and traveling 50-100km, refasten the wheel nuts to the specified torque.
- Make sure the tire is not touching the vehicle body when you attach it.
- Never mount a tire on a rim that is damaged or which has been repaired by welding or brazing.
- Do not mix different tire size designations or constructions on the same axle, except for limited use of temporary spare tires.
- Tires should be mounted only by professionally trained persons.

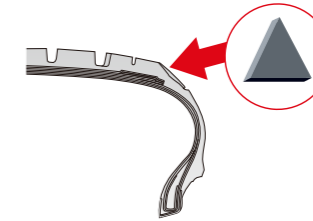
## Important notes on air pressure

- Make sure to follow instructions in the car owner's manual or on the vehicle tire information placard in the car to maintain proper tire pressure, particularly for driving on highways and carrying heavy loads.
- Never bleed or reduce air pressure when tires are hot from driving.
- Over- or under-inflation is dangerous and could lead to accidents or tire damage.
- Check tire (including spare tire) inflation pressure at least once a month and before ever long trip.

## Wear limit

- Tire use should be discontinued once the remaining tread depth reaches 1.6mm, as shown by the tread wear indicator. Change to new tires before this happens.

## Tread Wear Indicator



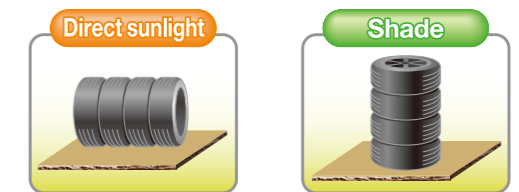
### Triangle marks (▲)

On the sidewall show the tread groove position of the "tread wear indicators", and these "tread wear indicators" indicate that 1.6mm of tread depth remain at which time tire should be replaced.

## Important points for safe driving

- To enhance traffic safety and extend tire life, YOKOHAMA recommends driving safely and avoiding unnecessarily hard acceleration, braking or cornering.
- If you feel that the car is unstable or making any unusual noises or vibrations, stop the car in a safe place and inspect its tires. Even if no visible defects are found, drive slowly and ask your tire dealer to inspect the tires as soon as possible.
- To enhance traffic safety, YOKOHAMA recommends driving substantially slower under adverse weather or road conditions.
- When inspecting the tires, also check for degradation and cracks in the valve. Be sure that the valve cap has been fastened properly.

## How to store tires



### Direct sunlight or rain may cause a change in color or cracking, etc.

Storing tires outside where they are exposed to direct sunlight or rain accelerates rubber degradation.

- Keep tires under cover to ensure water does not get inside tires.
- Do not keep tires in places where they are likely to come in contact with oil or water as well as be damaged or change shape
- Do not keep tires near generators or batteries.
- Do not store tires over long periods since materials within tires become more likely to be discharged and stain the ground.
- When storing tires (without rim), it is recommended to store vertically to prevent deformation.

## Wheel alignment

- In the event of a problem with the suspension system of a vehicle, driving stability may be compromised and the tires may wear abnormally. Please check and adjust wheel alignment to make sure it is correct.

# YOKOHAMA Global Production

## Global Production and Sales Companies

- 1 **Yokohama Tire Manufacturing Virginia, LLC**  
1500 Indiana Street, Salem, VA 24153, U.S.A
- 2 **Yokohama Tire Manufacturing Mississippi, LLC**  
1 Yokohama Blvd, West Point, MS 39773, U.S.A.
- 3 **Yokohama Industries Americas Ohio Inc.**  
474 Newell Street, Painesville, OH 44077, U.S.A.
- 4 **Yokohama Industries Americas Inc.**  
105 Industry Drive, Versailles, KY 40383, U.S.A.
- 5 **Suzhou Yokohama Tire Co., Ltd.**  
No.158, Huaqiao Road, Xuguan Industrial Park, Suzhou National New & Hi-Tech Industrial Development Zone, Suzhou, Jiangsu Province, 215151, CHINA
- 6 **Hangzhou Yokohama Tire Co., Ltd.**  
No.55, No.3 Street, Hangzhou Economic and Technical Development Area, Hangzhou, Zhejiang 310018, CHINA
- 7 **Yokohama Tire Philippines, Inc.**  
IE5, Clark Freeport Zone, Pampanga, PHILIPPINES 2023
- 8 **Yokohama Tire Manufacturing (Thailand) Co., Ltd.**  
7/216 Moo. 6 Amata City Rayong Industrial Estate, Tambol Mapyangporn, Amphur Pluakdaeng, Rayong Province 21140, THAILAND
- 9 **Yokohama Tyre Vietnam Inc.**  
No.17, Street 10, Vietnam Singapore Industrial Park, Binh Hoa ward, Thuan An city, Binh Duong Province, VIETNAM
- 10 **Shandong Yokohama Rubber Industrial Products Co., Ltd.**  
Xinzhai Local Town, Linqu County, Weifang City, Shandong Province, CHINA 262610
- 11 **Yokohama Industrial Products - Hangzhou Co., Ltd.**  
No.89, Sanfeng Road, Qianjin Industrial Park Jiangdong Level Block Hangzhou, CHINA 311227
- 12 **SC Kingflex Corporation**  
No. 99, Xiyuan Road, Zhongli Dist., Taoyuan City 320, TAIWAN R.O.C.
- 13 **Yokohama Rubber (Thailand) Co., Ltd.**  
Eastern Seaboard Industrial Estate, (Rayong) 64 Moo 4 Tambol Pluakdaeng, Ampur Pluakdaeng Rayong 21140, THAILAND
- 14 **LLC Yokohama R.P.Z.**  
RF, 398010, Lipetsk region, Gryazy district, Gryazy town, territory of SEZ PPT Lipetsk, building 47, block 11, RUSSIA
- 15 **Yokohama India Pvt.Ltd.**  
Plot No.1 Sector 4B, Bahadurgarh Industrial Estate, HSIIDC Bahadurgarh, Dist - Jhajjar, Haryana 124507, INDIA
- 16 **PT. Yokohama Industrial Products Manufacturing Indonesia**  
Jl. Mas Surya Negara VIII No.6 Kawasan Industri Terpadu Kabil Batam 29467, INDONESIA
- 17 **Alliance Tire Company Ltd.**  
**Head office, Hadera Plant**  
P.O.Box 48, Hadera 38100, ISRAEL
- 18 **ATC Tires Private Ltd.**  
**Tirunelveli Plant**  
Plot No. A2, SIPCOT Industrial Growth Centre, Gangaikondan, Tirunelveli, 627 352, INDIA
- 19 **ATC Tires Private Ltd.**  
**Dahej Plant**  
D-III, 23 & 23A Dahej Industrial Estate, Village-Samantpore, Taluka-Vagra, District Bharuch, Gujarat-392 140, INDIA

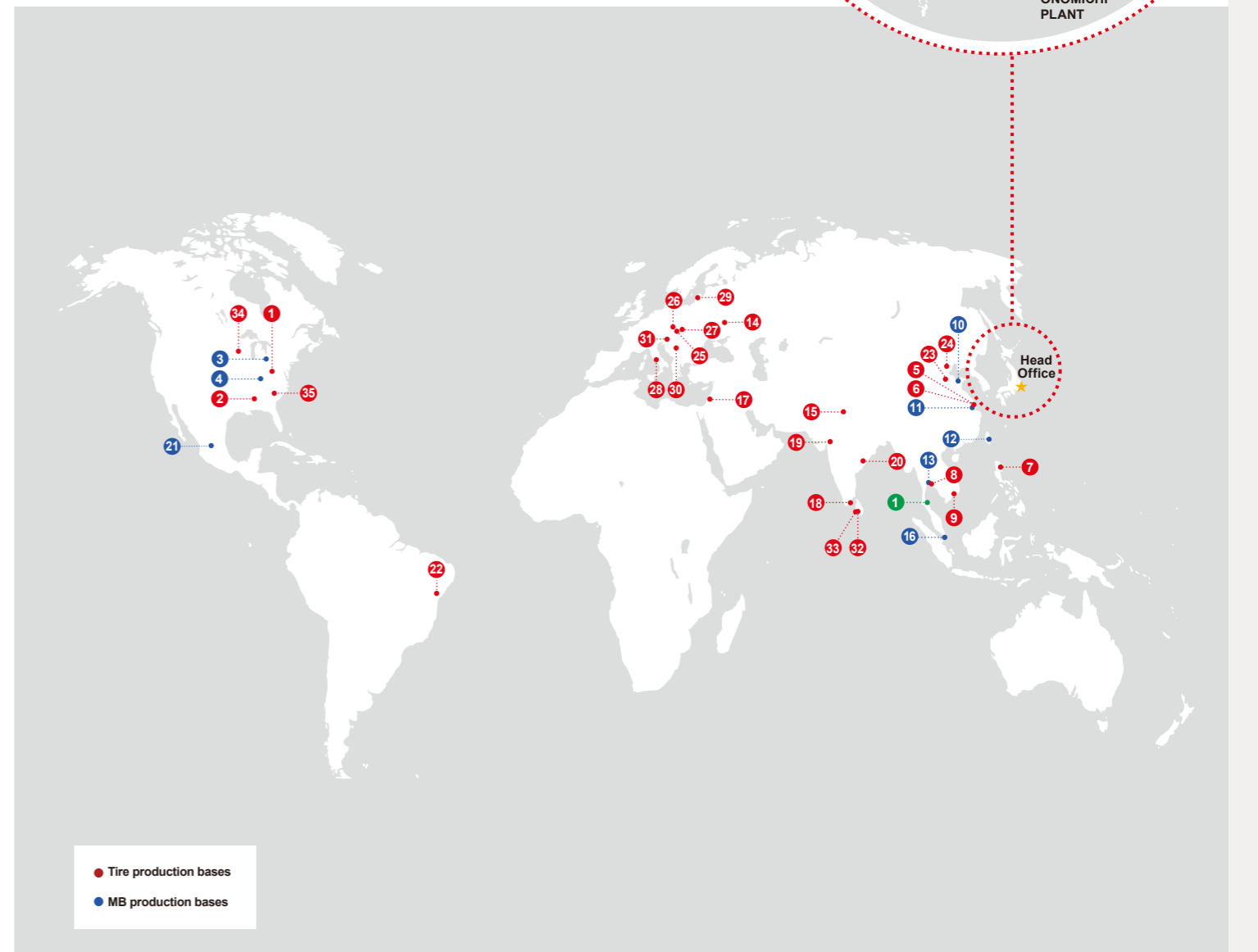
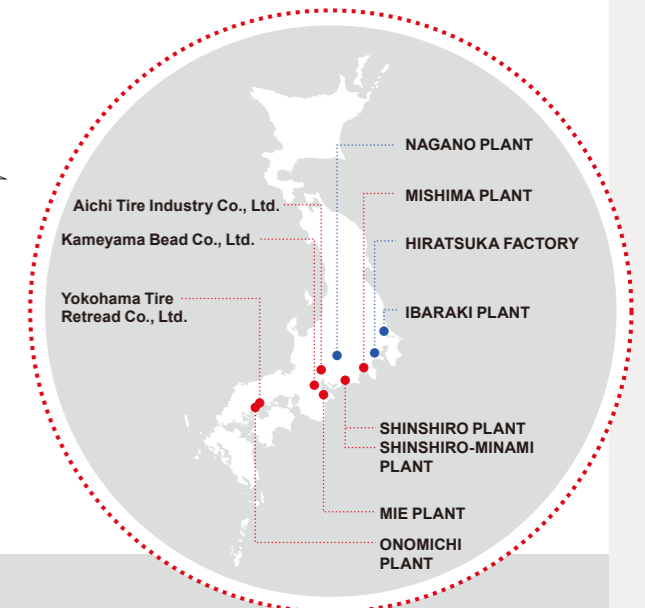
- 20 **ATC Tires AP Private Ltd.**  
**Visakhapatnam Plant**  
Plot Nos 7, 8A, 8A2, 8B and 8C, APIIC Industrial Area, Special Projects Zone, Atchutapuram, Visakhapatnam, Andhra Pradesh, 531011, INDIA
- 21 **Yokohama Industries Americas de Mexico, S. de R.L. de C.V.**  
Circuito Cerezos Oriente #101, San Francisco de los Romo, Aguascalientes, C.P. 20355, MEXICO
- 22 **Yokohama TWS Brazil Indústria e Comércio de Borrachas e Polímeros Ltda.**  
**Feira De Santana Plant**  
Avenida Deputado Luis Eduardo Magalhães, S/N Quadra J Blocos A e B no Bairro Limoeiro Feira de Santana – Bahia CEP 44.097- 324, BRASIL
- 23 **Yokohama TWS (Hebei) Co. Ltd.**  
**Hebei Plant**  
NO. 788 Zhongxing St. West Xingtai Hebei 054000, CHINA
- 24 **Yokohama TWS (Xingtai) Co. Ltd.**  
**Xingtai Plant**  
NO. 999 Jianshe St Xingtai Hebei 054000, CHINA
- 25 **Yokohama TWS Czech Republic a.s.**  
**Otrokovice Plant**  
Třída Tomáše Bati 1740 765 01 Otrokovice, CZECH REPUBLIC
- 26 **Yokohama TWS Czech Republic a.s.**  
**Prague Plant**  
Švehlova 1900/3, Záběhlice, 106 00 Praha 10, CZECH REPUBLIC
- 27 **Yokohama TWS Czech Republic a.s.**  
**Zlín Plant**  
Vavrečkova 7248 762 02 Zlín, CZECH REPUBLIC
- 28 **Yokohama TWS S.p.A.**  
**Tivoli Plant**  
Tivoli (RM) Via Nazionale Tiburtina 143 Postal Code 00019, ITALY
- 29 **Yokohama TWS Latvia LSEZ SIA**  
**Liepaja Plant**  
Kapsēdes iela 2 Liepāja LV-3414, LATVIA
- 30 **Yokohama TWS Serbia d.o.o.**  
**Ruma Plant**  
Industrijska bb 22 400 Ruma, SERBIA
- 31 **Yokohama TWS Slovenia, d.o.o.**  
**Kranj Plant**  
Škofjeloška cesta 6 4000 Kranj, SLOVENIA
- 32 **Yokohama TWS LK (Pvt.) Ltd.**  
**Malwana Plant**  
45, B E P Z Biyagama Walgama Malwana Postal Code 11670, SRI LANKA
- 33 **Yokohama TWS Tyres Lanka (Pvt.) Ltd.**  
**Yokohama TWS Lanka (Pvt.) Ltd.**  
**Sapugaskanda Plant**  
Levin Drive Sapugaskanda Makola Postal Code 11640, SRI LANKA
- 34 **Yokohama TWS North America, Inc.**  
**Charles City Plant**  
1200 Rove Avenue Charles City IA 50616, U.S.A.
- 35 **Yokohama TWS North America, Inc.**  
**Spartanburg Plant**  
790 Reeves Street Spartanburg SC 29301, U.S.A.

## Natural Rubber Processing

- 1 **Y.T. Rubber Co., Ltd.**  
51/2 Moo.1 Tambon Tha Sa Thorn, Amphur Phunphin Suratthani 84130, THAILAND

## Domestic Production Sites

- |   |   |
|---|---|
| <b>Hiratsuka Factory</b><br>2-1 Oiwake, Hiratsuka City, Kanagawa Prefecture, 254-8601                   | <b>Onomichi Plant</b><br>20 Higashi-Onomichi, Onomichi City, Hiroshima Prefecture, 722-0051             |
| <b>Mie Plant</b><br>1038 Takabuku, Misono-cho, Ise City, Mie Prefecture, 516-8530                       | <b>Nagano Plant</b><br>9100 Kawano, Toyookamura, Shimoina-gun, Nagano Prefecture, 399-3201              |
| <b>Mishima Plant</b><br>8-1 Minami Futsuka-machi, Mishima City, Shizuoka Prefecture, 411-0832           | <b>Yokohama Tire Retread Co., Ltd.</b><br>2-165-28 Tyoujahara, Onomichi, Hiroshima Prefecture, 722-0221 |
| <b>Shinshiro Plant</b><br>1 Furuyashiki, Noda-Aza, Shinshiro City, Aichi Prefecture, 441-1343           | <b>Kameyama Bead Co., Ltd.</b><br>820-6 Taikojicho, Kameyama City, Mie Prefecture, 519-0168             |
| <b>Shinshiro-Minami Plant</b><br>10-24 Oiri, Hitokuwada-Aza, Shinshiro City, Aichi Prefecture, 441-1338 | <b>Aichi Tire Industry Co., Ltd.</b><br>5827-1, Nenjojzaka, Okusa, Komaki City,                         |
| <b>Ibaraki Plant</b><br>1 Hatori-Nishi, Omitama City, Ibaraki Prefecture, 319-0198                      |   |



As of July 2023



# YOKOHAMA Global Sales

## Overseas Sales Companies/Operating Companies

- 1 Yokohama Tire (Canada) Inc.**  
Unit 218 20353 64th Avenue, Langley, BC,  
Canada V2Y 1N5, CANADA
- 2 Yokohama Tire Corporation**  
1 MacArthur Place, Suite 800 Santa Ana, CA 92707, U.S.A.
- 3 Yokohama Aerospace America, Inc.**  
22223 68th Avenue South, Kent, WA 98032-1010, U.S.A.
- 4 Yokohama Rubber Latin America  
Indústria e Comércio Ltda.**  
Rua Cubatao, n86 – Conjunto 1510 – 15 Andar,  
04013-000 Paraisópolis, São Paulo/SP, BRASIL
- 5 Yokohama Rubber (China) Co., Ltd.**  
10F, GUBEI SOHO, 188 Ruby Road,  
Shanghai, 201103, CHINA
- 6 Yokohama Tire Sales (Shanghai) Co., Ltd.**  
10F, GUBEI SOHO, 188 Ruby Road,  
Shanghai, 201103, CHINA
- 7 Yokohama Industrial Products Sales  
-Shanghai Co., Ltd.**  
10F, GUBEI SOHO, 188 Ruby Road,  
Shanghai, 201103, CHINA
- 8 Yokohama Tire Taiwan Co., Ltd.**  
Suite 601 6th Floor No.88, Sec 2,  
Chung Hsiao E. Road, Taipei, TAIWAN R.O.C.
- 9 Yokohama Tire Korea Co., Ltd.**  
Hwangwha B/D 602,320 Gangnam-daero,  
Gangnam-gu, Seoul, KOREA
- 10 Yokohama Asia Co., Ltd.**  
7th floor, Zone A, Thanapoom Tower,  
1550 New Petchburi Road,  
Makkasan, Rattthawi, Bangkok 10400, THAILAND
- 11 Yokohama Tire Sales Philippines, Inc.**  
3F Kentek Bldg, 828 A.Arnaiz Ave.,  
San Lorenzo Village, 1223, Makati City, PHILIPPINES
- 12 Yokohama Tire Sales (Thailand) Co., Ltd.**  
12th Floor, Zone A, B, Thanapoom Tower,  
1550 New Petchburi Road, Makkasan,  
Rattthawi, Bangkok 10400, THAILAND
- 13 Yokohama Europe GmbH**
- 13 Yokohama Europe GmbH Industrial Products Division**  
Monschauer Strasse 12, D-40549 Düsseldorf, GERMANY
- 14 Yokohama Scandinavia AB**  
Gustavslundsvägen 135, SE-167 51 BROMMA, SWEDEN
- 15 Yokohama Russia L.L.C.**  
Panfilova street 19 Building, 1, 3rd Floor, 141407 Khimki,  
Khimki-Center, Moscow region, RUSSIA
- 16 Yokohama H.P.T.Ltd.**  
Dawson Road, Mount Farm, Bletchley,  
Milton Keynes, Buckinghamshire, MK1  
1QY, UNITED KINGDOM
- 17 Yokohama Suisse SA**  
La Maladière 16, 1562 Corcelles-près-Payerne,  
SWITZERLAND
- 18 Yokohama Iberia S.A.**  
Avda. Isla Graciosa, 1-2º planta puerta 6.  
28703, San Sebastián de los Reyes, Madrid, SPAIN
- 19 YOKOHAMA France S.A.S.**  
2, rue Philippe Lebon, B.P.375,  
F-69746 GENAS Cedex, FRANCE
- 20 Yokohama Tyre Australia Pty., Ltd.**  
123-129 Silverwater Road, Silverwater,  
N.S.W. 2128, AUSTRALIA

- 21 Yokohama Tire Mexico S. de R.L. de C.V.**  
Boulevard Bernardo Quintana #300-1102 (Piso 11),  
Col. Centro Sur, C.P. 76090, Querétaro, Qro, MEXICO
- 22 Yokohama Industrial Products Asia-pacific Pte. Ltd.**  
160 ROBINSON ROAD, #15-01 SBF CENTER,  
SINGAPORE 068914
- 23 Yokohama Corporation Of North America**  
1 MacArthur Place, Suite 800 Santa Ana, CA 92707, U.S.A.
- 24 ATC Tires Private Ltd.**  
Head office :  
Unit No. 1001, 10th Floor Tower A, Embassy 247,  
Lal Bahadur Shastri Marg, Vikhroli – West,  
Mumbai 400083, INDIA
- 25 Alliance Tire Europe B.V.**  
Alpha Tower De Entree 59 1101 BH Amsterdam,  
THE NETHERLANDS
- 26 Yokohama Off-Highway Tires America, Inc.**  
201 Edgewater Drive, Suite 285, Wakefield,  
MA 01880, U.S.A.
- 27 Yokohama CEE Spółka z o.o.**  
Al. Jerozolimskie 65/79 00-697 Warszawa, POLAND
- 28 Yokohama Tyre Sales Malaysia Sdn. Bhd.**  
No.15 Jalan Jurutera U1/23, Seksyen U1,  
HICOM-Glenmarie Ind.Park, 40150 Shah Alam,  
Selangor Darul Ehsan, MALAYSIA
- 29 Yokohama TWS Australia Pty Ltd**  
25 Darby Way Dandenong South, VIC 3175,  
AUSTRALIA
- 30 Yokohama TWS Austria GmbH**  
Am Taich 1 Sankt Valentin Postal Code 4300, AUSTRIA
- 31 Yokohama TWS Belgium NV**  
Brugse Steenweg 7 9940 Evergem, BELGIUM
- 32 Yokohama TWS Brazil Ltda.**  
Av. Pref. João Víalalobo Quero 1960 Barueri  
SP CEP 06422-122, BRASIL
- 33 Yokohama TWS Canada Inc.**  
1275 Pitfield Saint-Laurent QC H4S 1G3, CANADA
- 34 Interfit France SAS**  
Zone industrielle d'Aix-les-Mille 900 rue Ampère 13100  
AIX-EN-PROVENCE, FRANCE
- 35 Yokohama TWS France SAS**  
Origin's Park Bâtiment E 176, rue Robert Schuman  
60610 LACROIX SAINT OUEN, FRANCE
- 36 Yokohama TWS Germany GmbH**  
Helmholtzstr. 1 D-64711 Erbach, GERMANY
- 37 White Baumaschinenreifen GmbH**  
Konrad Adenauer Ring 22 D-47167 Duisburg-Neumühl,  
GERMANY
- 38 PT Yokohama TWS Indonesia**  
Wisma Korindo 5th Floor Jl. M. T. Haryono Kav. 62  
Jakarta 12780, INDONESIA
- 39 Yokohama TWS (Malaysia) Sdn. Bhd.**  
No 4 Jalan Ruang U8/109 Section U8 Bukit Jelutong  
40150 Shah Alam, Selangor, MALAYSIA
- 40 Yokohama TWS Mexico S.A. de C.V.**  
Hermenegildo Galena #357 Oriente Colonia El Lechugal  
Santa Catarina Nuevo Leon Postal Code 66376, MEXICO
- 41 TRS Tyre & Wheel Ltd**  
1 Imlay Place Castlecliff Whanganui 4501, NEW ZEALAND
- 42 Yokohama TWS Poland Sp. z o.o.**  
A. Struga 66 90-557 Łódź, POLAND

- 43 OOO Mitas**  
115432, RUSSIA, Moscow, Proektiruemyi proezd 4062-th,  
block 6, building 16, office 26
- 44 Yokohama TWS RUS OOO**  
115432, RUSSIA, Moscow, Proektiruemyi proezd 4062,  
house 6, building 16, room 25
- 45 Yokohama TWS Singapore Pte. Ltd.**  
4, Jalan Pesawat, SINGAPORE 619362
- 46 Yokohama TWS Slovakia a.s.**  
Černyševského 3427/26 Bratislava - mestská časť  
Petržalka 851 01, SLOVAKIA
- 47 Yokohama TWS South Africa (Pty) Ltd**  
19 Nederveen Highway, Corner Philip Road Roodekop  
Leondale Germiston, SOUTH AFRICA Postal code: 1401
- 48 Yokohama TWS Spain S.A.**  
Pau Claris, 163 3º 08037 Barcelona, SPAIN
- 49 Yokohama TWS Sweden AB**  
Box 1088 231 81 TRELLEBORG, SWEDEN
- 50 Yokohama TWS Switzerland GmbH**  
Bertiswilstrasse 52 Rothenburg Postal Code 6023,  
SWITZERLAND
- 51 Yokohama TWS Netherlands B.V.**  
Zadelmakerstraat 4 2984CC Ridderkerk,  
THE NETHERLANDS
- 52 Interfit Ltd**  
Unit 5 Lighthouse Trade Park Church Road Lydney  
Gloucestershire, ENGLAND GL15 5EN
- 53 Yokohama TWS UK Ltd**  
Unit 5 Lighthouse Trade Park Church Road Lydney  
Gloucestershire, ENGLAND GL15 5EN
- 54 Yokohama TWS Holding AB**  
Trelleborg AB (publ) Johan Kocksgatan 10 231 22  
TRELLEBORG, SWEDEN

## Procurement and sale of raw materials for use in tires and industrial-use products

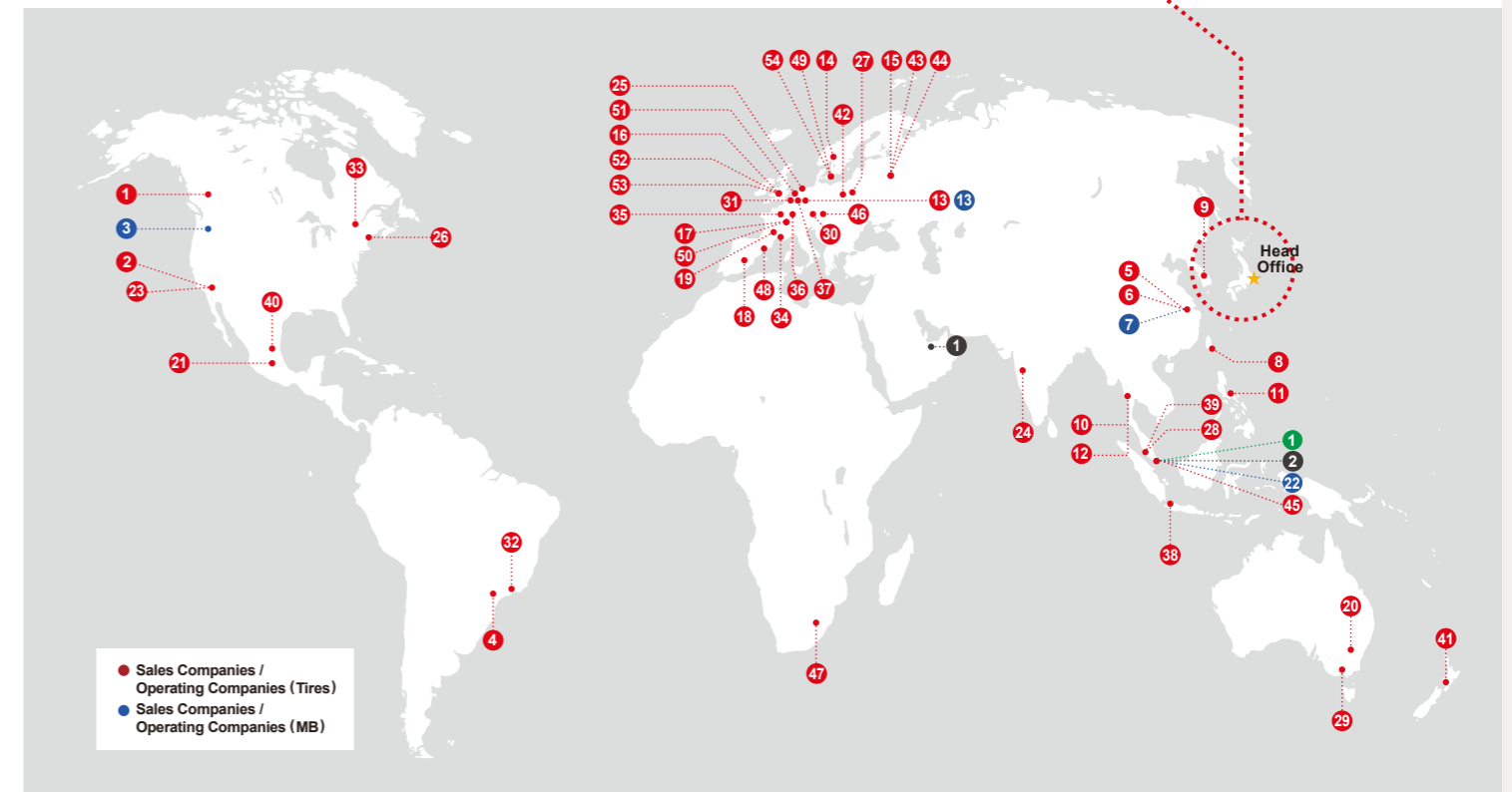
- 1 Yokohama Rubber Singapore Pte. Ltd.**  
160 ROBINSON ROAD, #15-01 SBF CENTER,  
SINGAPORE 068914

## Overseas Representative Offices/Branch Office

- 1 Dubai Office**  
P.O. Box 296846, (Location: DAFZA 3E G01),  
Dubai, UNITED ARAB EMIRATES
- 2 Singapore Branch**  
160 ROBINSON ROAD, #15-01 SBF CENTER,  
SINGAPORE 068914

## Domestic Sales Companies

- Yokohama Tire Japan Co., Ltd.**  
Shinagawa Intercity Tower C 13th floor, 15-3 Konan 2-chome,  
Minato-ku, Tokyo 108-6213
- PRGR CO., LTD**  
2-1 Oiwake, Hiratsuka City, Kanagawa Prefecture, 254-8601
- YOKOHAMA INDUSTRIAL PRODUCTS JAPAN CO., LTD.**  
Shinagawa Intercity Tower C 13th floor, 15-3 Konan 2-chome,  
Minato-ku, Tokyo 108-6213
- Yokohama Rubber Marine & Aerospace Co., Ltd.**  
2-1 Oiwake, Hiratsuka City, Kanagawa Prefecture, 254-8601





# Check your tires once a month to maintain performance and ensure safety.

Facts about tires

Details of tire safety checks are introduced via our website.

[http://www.y-yokohama.com/global/product/tire/learn/care\\_safety/](http://www.y-yokohama.com/global/product/tire/learn/care_safety/)

Check!

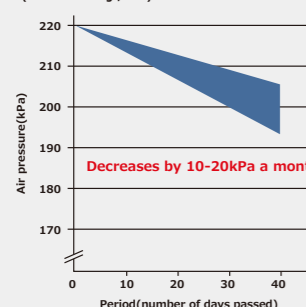
## Do you know about optimal air pressure?

### Optimal air pressure varies according to each car.

Please check the sticker attached near the door on the driver's seat side for details regarding air pressure.

Tire air pressure decreases naturally by 10-20kPa every month.

Tire size: 195/65R15 Starting pressure: 220kPa (100kPa=1.0kgf/cm<sup>2</sup>)



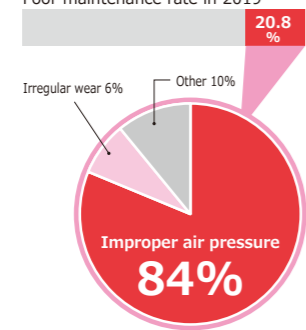
Regularly check your tires to maintain optimal air pressure.

(Source: JATMA)

### Too high or too low air pressure causes problems!

Approximately one in every five vehicles are running on poorly maintained tires and the tire air pressure of approximately 80% of these vehicles is improper.

Poor maintenance rate in 2019



(Source: JATMA, 2019)

## When tire air pressure decreases ...

### 1 Fuel consumption gets worse!

Rolling resistance increases and leads to a decrease in fuel economy due to energy loss.

### 2 Tires are more likely to wear unevenly!

Too low air pressure usually causes uneven tire wear on the outer edge of the tire tread whereas too high air pressure is more likely to cause uneven wear on the center of the tread.

### 3 Driving performance declines!

Tire deformation is more likely to occur, compromising stability. Additionally, even if it's a high performance tire, driving performance cannot be maintained, thereby affecting safety.

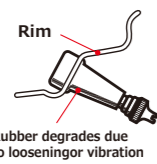


We recommend replacing the tubeless valve stem when replacing tires.



When tire valves deteriorate, it is more likely to cause air leakage.

• Since tubeless valves are made of the same rubber material as tires, they deteriorate over time due to heat and other factors.



• Air leak from degraded part. Rubber degrades due to loosening or vibration.



Loosening of valve attachment part

Rubber degrades due to loosening or vibration

Degradation of a valve core rubber

Check!

## Have you checked your tread depth?

### Let's check for indications of tread wear.



\*Circled areas are marked in color for explanatory purposes.

An indication of tread wear is when the tread depth drops to approximately 1.6mm.

## When the tread is worn down ...

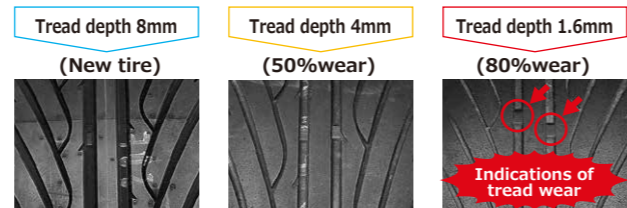
### 1 The brakes are likely to become less effective on wet roads!

When the tread depth drops below roughly 50% of new tires, the brake performance of tires on wet roads will gradually decline and the braking distance increases significantly.

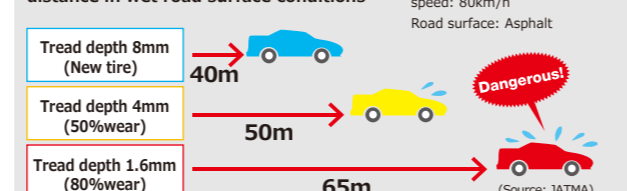
### 2 Driving at high speeds in the rain is particularly dangerous!

When the tread depth decreases, drainage capability declines and it is more likely to cause slippage in rainy weather. Aquaplaning tends to occur and diminish steering and brake effectiveness especially when driving at high speeds.

Using a tire with indications of tread wear is prohibited as stipulated by laws and regulations.



Relationship of tread depth and braking distance in wet road surface conditions



Tire size: 165SR13 radial rib  
Initial braking speed: 80km/h  
Road surface: Asphalt

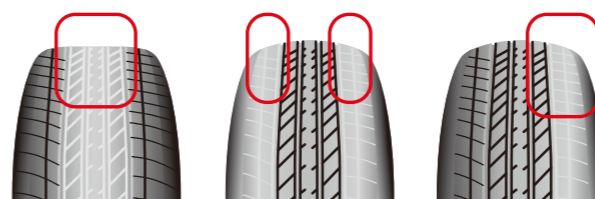
Tires with a tread depth of 1.6mm or less are not allowed to be used as stipulated by laws and regulations.

Check!

## Do You have uneven tire wear?

### Uneven tire wear reduces the useful life of tires.

- **Center wear**  
Wear at the center of the tread caused by too high air pressure
- **Shoulder wear**  
Wear on the outer edges or shoulders caused by insufficient air pressure
- **One-sided wear**  
Heavy vehicles such as minivans are more likely to cause tire wear on one side



Normally, front tires wear out quickly when tires are not rotated.

Tire rotation is recommended on a regular basis (roughly every 5,000).

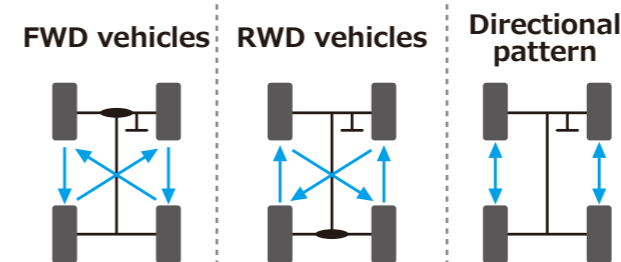


### Benefits of tire rotation

- Prevention of uneven tire wear
- Extension of useful life of tires
- Consistent level of tire wear

\*Front tires of FWD vehicles wear out more quickly than rear tires since front tires serve both as driving and steering wheels.

General method of rotation



Early adjustment is recommended when tire wear is caused by misalignment.



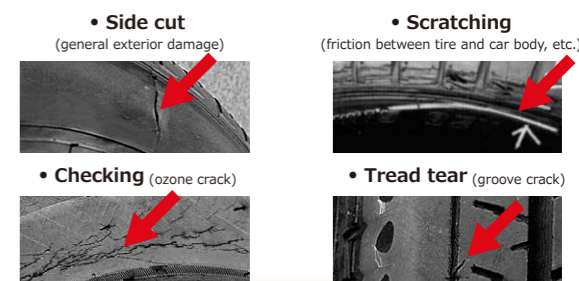
Early tire replacement is recommended when tires are reaching advanced stages of wear.



Check!

## Do you have damage or cracks on your tires?

### These can cause problems such as a flat tire.



### Main causes of damage

- Coming into contact with the curb or other obstacles on the road.
- Foreign objects such as rocks lodged in the tire.

### Main causes of checking

- Excessive bending and stretching due to insufficient air pressure, etc.
- Concentration of stress on certain parts due to damage, etc.
- Degradation caused by UV rays, heat, etc.
- Overload and other causes due to running on curbs, etc.

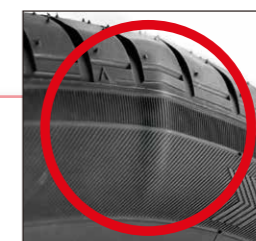
Early tire replacement is recommended since damage or checking can cause problems.



Check!

## Are surface irregularities on the side of your tires normal?

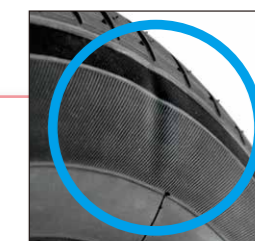
### Bulge on the sidewall of a tire



When a certain area of the tire sidewall is partially protruding, a cord may have broken internally due to external causes such as shock, and is therefore dangerous.

Replace the tire immediately.

### Dent on the sidewall of a tire



There are cases in which a dent occurs and extends toward the sidewall area of a tire. Such dents occur due to the internal structure and have no effects in terms of safety.

This is not a sign of a defective tire.